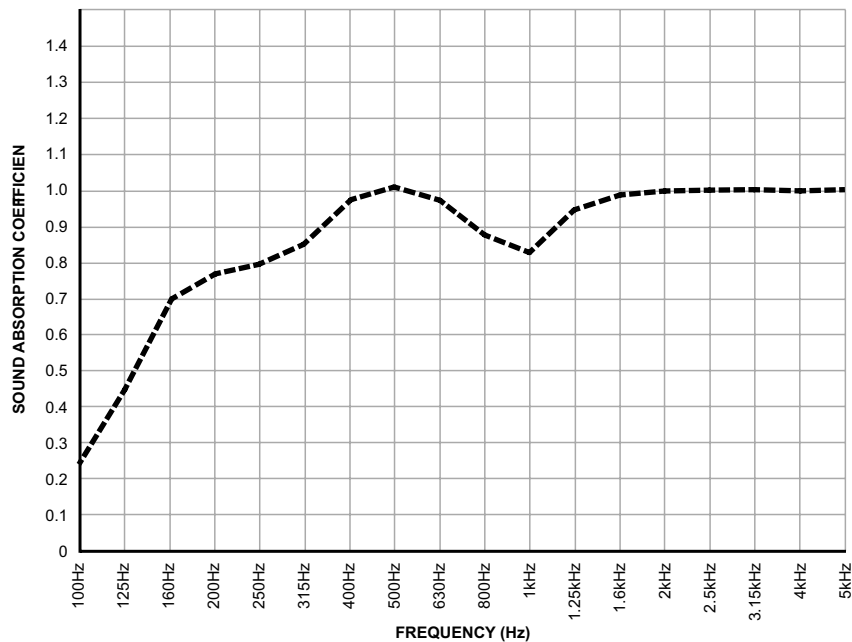


PRIMACOUSTIC STRATOTILE™
Fiberglass Composite Acoustic Ceiling Tile

MÜLLER-BBM
 VibroAkustik Systeme

Müller-BBM GmbH
 Robert-Koch-Straße 11
 D-82152 Planegg

TEST DATE: August 12, 2005
 TEST FACILITY: Müller-BBM GmbH
 TEMP / HUMIDITY: 22.2°C / 45% (atmospheric pressure 94.8 kPa)
 SPECIMEN: Primacoustic StratoTile fiberglass ceiling tile with 600mm x 600mm x 20mm thick.
 TOTAL TEST AREA: The total test area was 18 meters²
 MOUNTING METHOD: 30 panels laid loosely, butt-joint, joints sealed with tape. Mounted with an non-damped airspace of 200mm deep behind it. Surrounding frame built of 20mm MDF boards. Joints between surrounding frame and panels and between surrounding frame and reverberation room floor taped air-tight.
 RELEVANT STANDARD: Relevant standard ISO 354
 REVERBERATION ROOM: Size 10.72 meters². Room volume = 199.7 meters³



This test report is for reference only and should be read in conjunction with the original. It has been condensed and reformatted to provide quick reference. Specifying engineers and sales associates should consult the entire test before using or recommending this product. You may download this test in PDF format from the Primacoustic web site or via email by contacting the company. Note that accredited test facilities present their findings based on standard industry tests and suitability of the product will depend on installation, application and other factors which are to be determined by the user, sales associate or specifying engineer. Primacoustic, its associated companies, staff and directors make no claims beyond the full test report.

ABSORPTION CHARACTERISTICS

Sound absorption coefficient data (NRC values)

100Hz	125Hz	160Hz	200Hz	250Hz	315Hz	400Hz	500Hz	630Hz	800Hz
0.25	0.44	0.70	0.77	0.80	0.86	0.98	1.02	0.97	0.88
1kHz	1.25kHz	1.6kHz	2kHz	2.5kHz	3.15kHz	4kHz	5kHz	NRC	
0.83	0.95	0.99	1.00	1.02	1.03	1.02	1.03	.95	

* Reference Report:
 No. M63 948/1