

PAINTABLES

Primacoustic Paintables™ are an innovative acoustic panel range that features a specially formulated textured latex surface that may be repainted or UV printed to match the color scheme and decor of your room or facility.

The design begins with the same high performance 6lb glass wool panel that is used in our popular Broadway series panels. Like Broadway, the Paintables are fully encapsulated with a micromesh tissue and feature resin hardened edges to create sharp, architecturally appealing lines. Rather than wrapping the panel in fabric, the face and edges of the Paintables are coated in a textured latex finish that is porous and breathable. This balanced formulation enables the panels to be spray-painted or custom printed without affecting the acoustic performance (see Primacoustic website for details).

Paintables ship in an attractive Absolute White™ finish and are available in a variety of sizes. This makes them perfectly suitable for both large scale and small room installations including house-of-worship, airports, home theater, offices, call centers, board rooms, restaurants, video conferencing rooms, broadcast facilities and recording studios of all sizes.

SPECIFICATIONS:

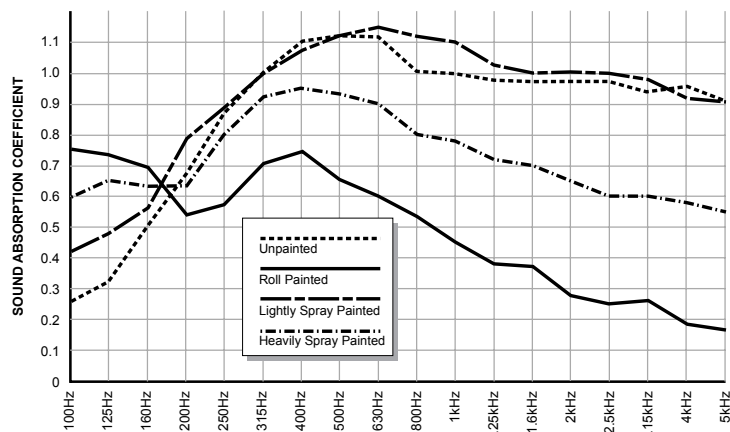
CORE MATERIAL	Formed, semi-rigid inorganic glass fibers, 6.0lbs pcf (96 kg/m ³)
FACING	Glass wool tissue micromesh sealed with water based latex paint
BACKING	Sealed with acoustically transparent micromesh
EDGE TREATMENT	Resin hardened with painted glass wool facing
COLOR	Absolute White™
RECYCLED CONTENT	Up to 40%
LEED ELIGIBLE	Yes

ABSORPTION CHARACTERISTICS:*

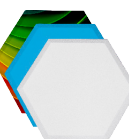
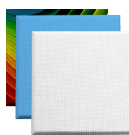
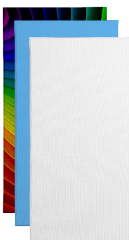
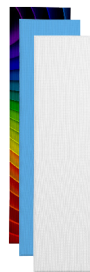
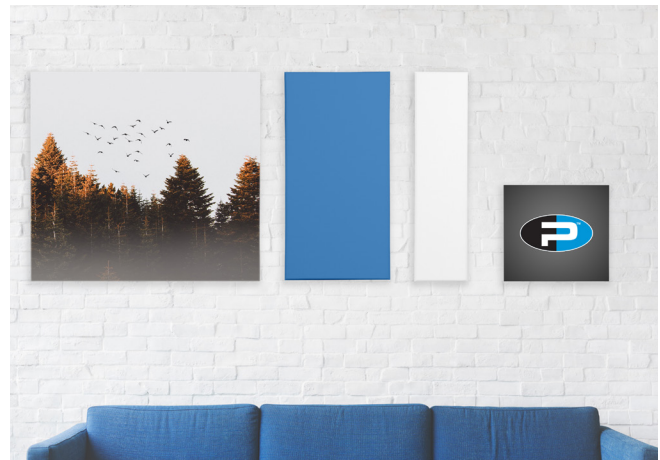
Sound absorption coefficient data for 2" (51mm) panels

	125Hz	250Hz	500Hz	1kHz	2kHz	4kHz	NRC
Unpainted	0.32	0.87	1.11	1.04	0.96	0.96	1.00
Rolled Paint	0.74	0.58	0.66	0.45	0.25	0.17	0.50
Light Spray Paint	0.48	0.89	1.12	1.10	1.00	0.92	1.05
Heavy Spray Paint	0.65	0.80	0.93	0.78	0.65	0.58	0.79

* Testing performed by Riverbank Acoustical Laboratories. The test method conform explicitly with the requirements of the ASTM Standard Test Method for Sound Absorption and Sound Absorption Coefficients by the Reverberation Room Method: ASTM C 423-02a and E795-05.


FIRE & BURN PERFORMANCE:

COUNTRY	TEST STANDARD	CLASSIFICATION
Canada	CAN/ULC-S102-10	Class A/1
USA	ASTM E84-11b	Class A/1
Europe	EN 13501-1	B-s2, d0
Australia / New Zealand	AS/NZS 1530.3	(I)0, (S)0, (H)0, (Sm)3


PRODUCT RANGE:

Control Columns™ 12"x48" (30.5cm x 122cm)
Highly effective for controlling primary reflections while introducing a 'classic romanesque' feel to any room. Well suited for wall surfaces such as side walls where greater acoustic sound control is required.

ORDER NO.	Thickness	EDGE	Weight / per	QTY
P122-1248-09	2" (51mm)	Beveled	4.25 lbs / 1.9 kg	6

Control Cubes™ 24"x24" (61cm x 61cm)
Control Cubes are used to control primary reflections on wall surfaces and well suited for large rooms that need acoustic control.

ORDER NO.	Thickness	EDGE	Weight / per	QTY
P102-2424-09	2" (51mm)	Square	4.25 lbs / 1.9 kg	6
P122-2424-09	2" (51mm)	Beveled	4.25 lbs / 1.9 kg	6

Broadband Panels™ 24"x48" (61cm x 122cm)
Full sized panels provide maximum absorption on larger wall surfaces. May also be used with Corner Impalers™ to create effective corner traps where bass control is required. Highly effective at all frequencies.

ORDER NO.	Thickness	EDGE	Weight / per	QTY
P101-2448-09	1" (25mm)	Square	5.3 lbs / 2.4 kg	6
P102-2448-09	2" (51mm)	Square	8.5 lbs / 3.9 kg	3
P122-2448-09	2" (51mm)	Beveled	8.5 lbs / 3.9 kg	3

48" x 48" (122cm x 122cm)
The 48x48 is designed for larger venues where maximum coverage is required.

ORDER NO.*	Thickness	EDGE	Weight / per	QTY
F102-4848-09	2" (51mm)	Square	8.0 lbs / 3.4 kg	3

Element™ 14"x16" (355x406mm)
Element™ panels can be clustered together for primary absorption or spread out for soft diffusion. Hexagon shaped for creating unique clusters and patterns on any wall surface.

ORDER NO.	Thickness	EDGE	Weight / per	QTY
P122-1248-09	2" (51mm)	Beveled	4.25 lbs / 1.9 kg	6