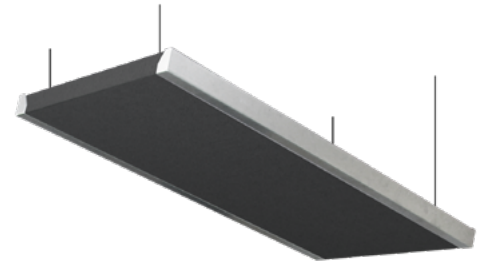


Stratus Studio Clouds



Your mixing console is the centrepiece of your studio. That place in the room where you spend hours upon hours making critical mixing decisions. Crafting your perfect mix calls for an optimized listening space, one free of annoying resonances and reverberation that can cause resonant peaks to arrive at the critical mix position.

Primacoustic Stratus Studio Ceiling Clouds are the perfect solution for an imperfect listening environment. Hung directly over your mixing console, Stratus Studio Ceiling Clouds eliminate ceiling reflections while enlarging the sweet spot in your studio. So you can focus on crafting the perfect mix, not shifting around to find the sweet spot.



Construction

Frame Material: Formed 16-gauge aluminium.

Core Panel Material: Formed, semi-rigid inorganic glass fibres.

Backing: Glass wool tissue micromesh.

Fabric Finish: Acoustically transparent Polyester fabric.

Paintable Finish: Paintable Absolute White™ latex coating.

Edge Treatment: Sealed and hardened with Resin.

Density: 6lb/ft³ (96kg/m³)

Recycled Content (panel): Up to 51%

Available Options

Dimensions

610 x 1,219mm (24 x 48")

Edge Types

☐ Square Edge

Thickness

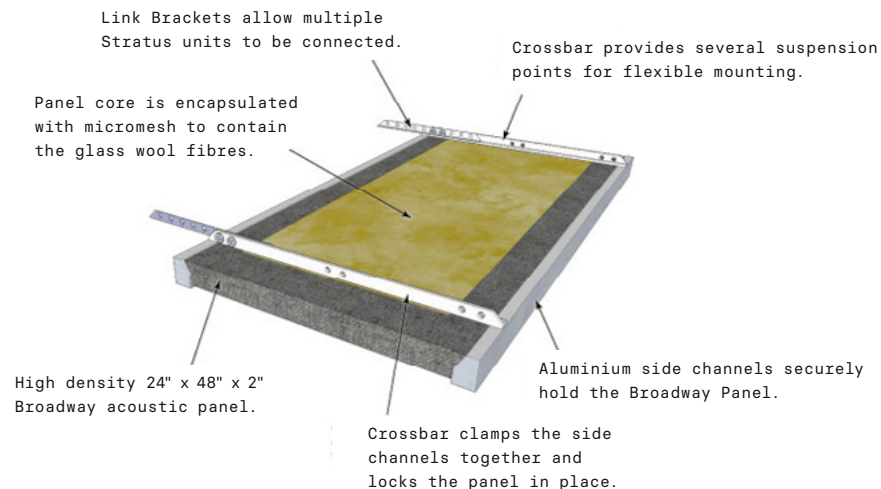
2" (51mm)

Available Finishes



The breathable latex finish of Paintable Absolute White™ panels allows them to be spray-painted any colour, or printed onto with a UV flatbed scanner.

Visit primacoustic.com/paintables for more information



The Primacoustic Stratus is an acoustic cloud system designed to create large acoustic ceilings by linking multiple units together with a rigid frame.

Test data shows the suspended Stratus cloud to be very effective at absorbing sound from 100Hz and up. This is achieved by a combination of the two inch glass wool panel and the air space formed behind the panel when suspended. The Stratus will absorb the powerful primary reflections that bounce off room boundaries as well as flutter echoes between the ceiling and floor.

Testing

Sound Absorption

Fabric Finish

NRC:

2" (51mm) - 1.00

3" (76mm) - 1.00

ASTM C423-02a; ASTM E795-05 (Type A)

Paintable Finish

NRC (based on a 2" thick panel):

Unpainted - 01.00

Rolled Paint - 0.50

Light Spray Paint - 1.05

Heavy Spray Paint - 0.79

ASTM C423-02a; ASTM E795-05 (Type A)

Installation Options

Suggested tools: Measuring Tape, Straight Edge, Drill, Level, Screwdriver, Screws, Drywall Anchors.

All necessary hardware for a standard installation is included.

Method

Suspending Clouds from the ceiling:

The included mounting hardware securely frames the cloud and provides mounting points to attach suspension wire. Installation on both solid and hollow-backed ceiling as possible. The adjustable SlipNot hardware allows the clouds to be angled for optimal performance.

Mounting Clouds directly to the ceiling:

If you prefer, the hardware can be adapted to mount the cloud flush against the ceiling.

Fire Safety

Fabric Finish

CAN/ULC-S102-03 - Class A/1

ASTM E84 - Class A/1

EN13501-1 - Class A-s1,d0

AS/NZS 1530.3 - (I)0,(S)0,(H)0,(Sm)5

Paintable Finish

CAN/ULC-S102-10 - Class A/1

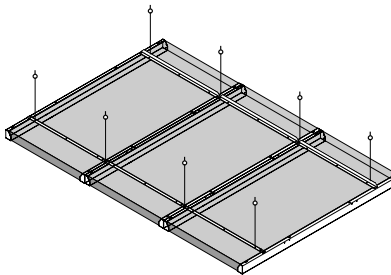
ASTM E84-11b - Class A/1

EN13501-1 - Class B-s2,d0

AS/NZS 1530.3 - (I)0,(S)0,(H)0,(Sm)3

Linking Clouds together:

The kit includes hardware which can be used to link multiple Stratus Clouds together.



Maintenance

A clean, dry cloth is recommended for cleaning the surface of Broadway panels. Water-based and other liquid cleaners are not advised, as they may strip the panel's surface coating.

Accolades



Up to 51% recycled content



Will contribute to meeting LEED standards.

Warranty

Primacoustic acoustic products are guaranteed to be free of manufacturing defects for a period of 3 years after purchase. Please visit www.primacoustic.com/service-warranty for more information.



BIM data available at www.primacoustic.com/bim-library