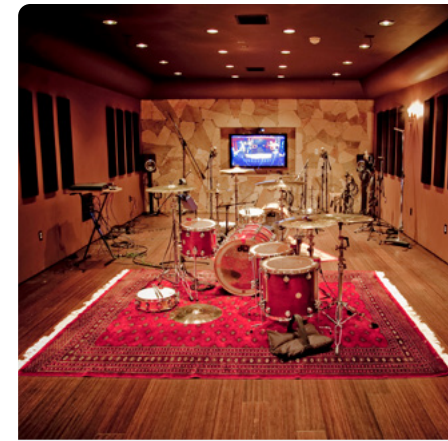
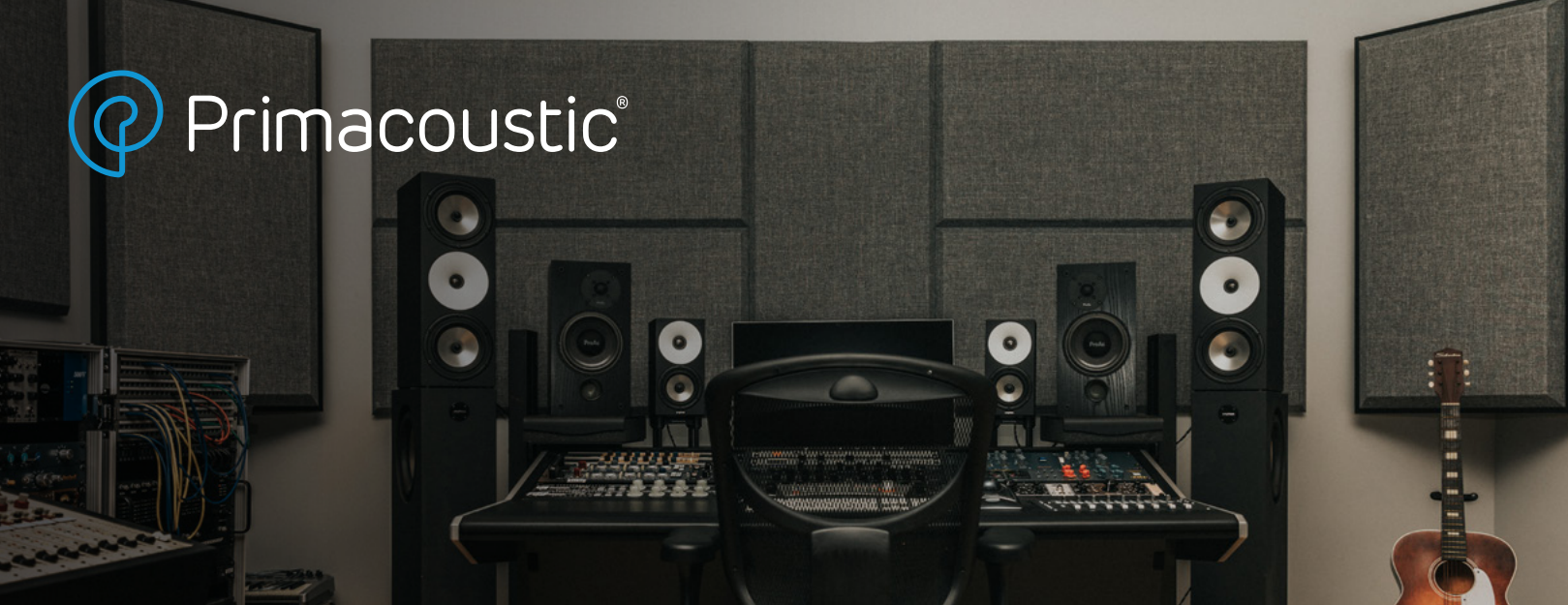


# Acoustic Treatment for Studios

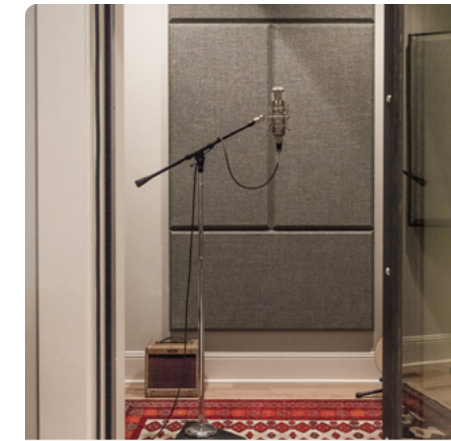


Be Heard

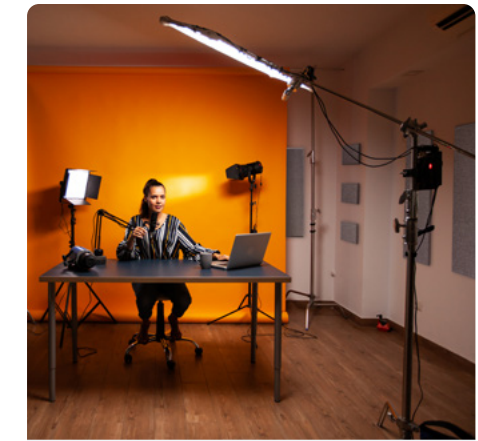




Live Rooms / Practice Rooms



Vocal Booths



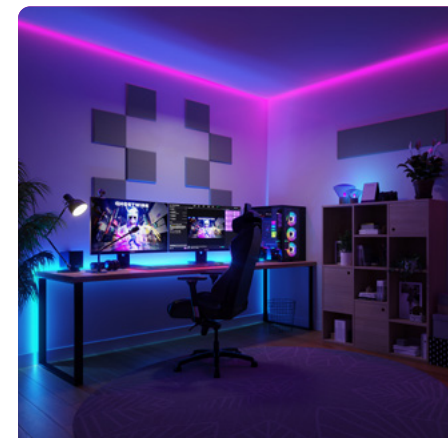
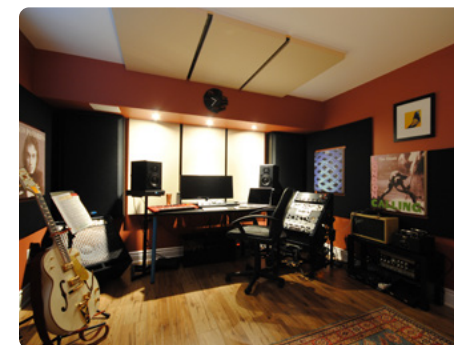
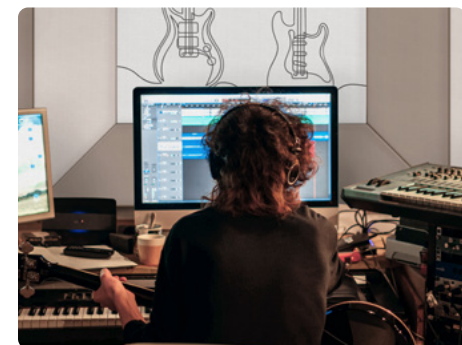
Streaming / Podcasting



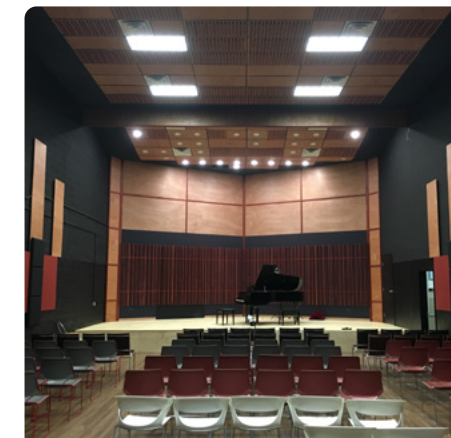
# Unleash your Studio's Full Potential

Create the perfect listening environment with Primacoustic's high-performance Broadway sound absorption panels. Whether you have a small converted bedroom or a professionally-designed mixing room, the quality of your mixes depends on the acoustics of your space. Our panels absorb primary reflections and reduce flutter echo, providing immediate relief and a clearer sound. Making mix and EQ decisions becomes easier, speeding up your workflow.

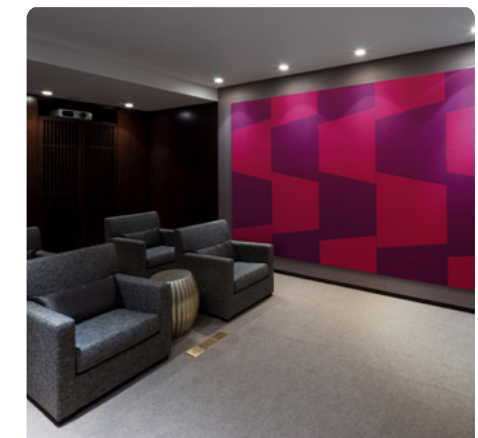
Choose Primacoustic for the pursuit of perfection in critical listening environments. Primacoustic's high-performance Broadway acoustic panels have been the choice of demanding audio professionals and enthusiasts for many years. Upgrade your recording studio today with Primacoustic and take your recordings to the next level.



Gaming



Live Spaces



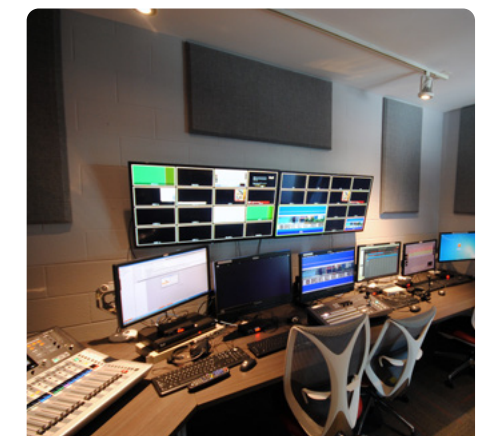
Audiophile / Home Theatre



Education



Editing Suites



Broadcast





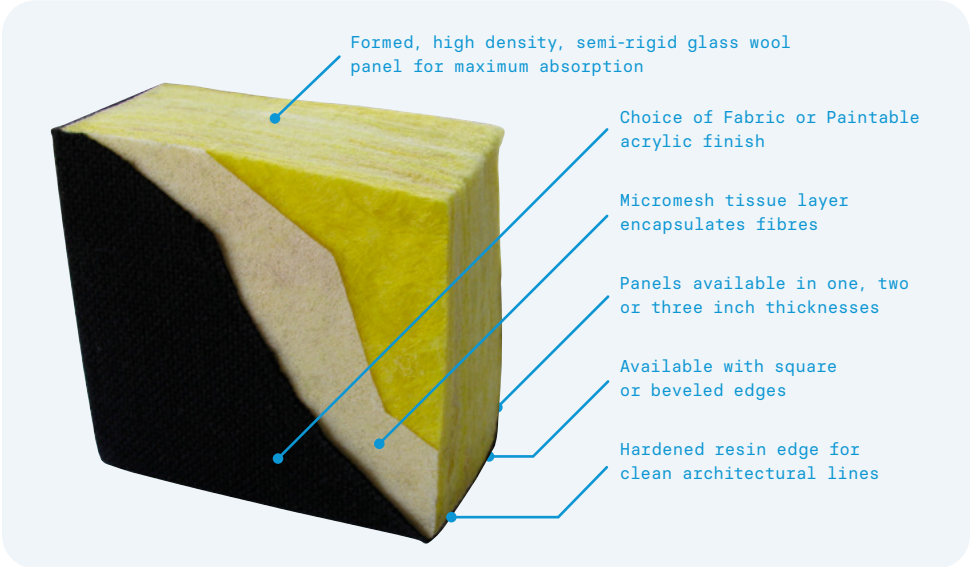
Made from high performance glass wool, which offers broadband absorption across all frequencies, Broadway panels will control sound reflections and increase playback accuracy in almost any critical listening environment. A variety of shapes, sizes, thicknesses and finishes are available.

Made of High-Quality Materials for Performance

Primacoustic Broadway panels are constructed of high density 6lb per cubic foot (96 kg/m³) glass wool with resin hardened edges. The panel core is fully encapsulated with micromesh to stop fibres from escaping.

The panels are then finished in one of two ways; an acoustically transparent fabric or a customizable, Paintable acrylic finish.

This construction means you'll enjoy balanced absorption right down into the difficult-to-manage bass range.



**Critical Listening**  
Glass wool panels are the industry standard acoustic treatment for use in rooms where audio fidelity really matters. Their superior absorption qualities work across the full audio spectrum.



**Fire Rated**  
To address safety concerns, Broadway panels have been tested to meet stringent Class-A/1 fire ratings making them suitable for use in residential, commercial and industrial spaces.



**LEED**  
LEED provides a framework for healthy, efficient, carbon and cost-saving green buildings. LEED certification is a globally recognized symbol of sustainability achievement and leadership.

Paintables

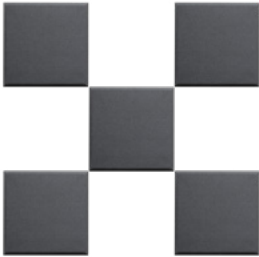
Primacoustic Paintables are an innovative acoustic panel range with a white finish that can be painted in the colour of your choice! The design begins with the same high-density glass wool core that is used in the rest of Broadway series. Rather than wrapping the panel in fabric, the face and edges of the Paintables are coated in a breathable acrylic finish that allows them to be spray-painted without affecting acoustic performance.

Paintables Are Also Printable!

The unique coated surface of the Paintables panels can be custom printed by any commercial print shop with a UV flatbed printer. This high-resolution printing applies a thin coating in vivid color to the face of the panel without affecting the acoustic performance. Graphics, photos, logos, or any other image - the choice is yours. Complete customization of your acoustic treatment is now possible!



BROADWAY Wall Panels



**Scatter Block**  
12 x 12" (305 x 305mm)  
1" (25mm) thick, Beveled Edge  
Available Finishes: Black, Beige, Grey



**Control Column**  
12 x 48" (305 x 1,219mm)  
1" (25mm), 2" (51mm) or 3" (76mm) thick  
Beveled Edge

Available Finishes: Black, Beige, Grey, Paintable



**Element**  
16 x 14" (406 x 355mm)  
1.5" (38mm) thick, Beveled Edge  
Available Finishes: Black, Beige, Grey, Paintable

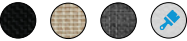


**Broadband Absorber**  
24 x 48" (610 x 1,219mm)  
1" (25mm), 2" (51mm) or 3" (76mm) thick  
Beveled or Square Edge

Available Finishes: Black, Arctic White, Beige, Linen, Grey, Paintable



**Control Cube**  
24 x 24" (610 x 610mm)  
2" (51mm) thick, Square or Beveled Edge  
Available Finishes: Black, Beige, Grey, Paintable



**48 x 48"**  
(1,219 x 1,219mm)  
2" (51mm) thick, Square Edge  
Available Finishes: Black, Arctic White, Beige, Linen, Grey, Paintable







Quick, Easy Installation

Each kit comes complete with a selection of Scatter Blocks, Control Columns, (and in the case of the London 12 & 16, Broadband Panels,) mounting Impalers, wall anchors and screws. Installation is quick and easy — fasten the Impalers to the wall using a couple of screws and simply hang the Broadway panels in place, just like hanging a picture. No more messy glue or expensive wall clean-up, and panels can be easily and cleanly relocated by reinstalling the Impalers in other locations.



A collection of Broadway high-density glass wool acoustic panels, designed to simplify full acoustic treatment projects. The kits contain the right number of panels needed to treat common studio sizes. Room kits include Scatter Blocks, Control Columns and mounting hardware, with the London 12 and 16 kits featuring Broadband Absorber panels as well.



London 8

Scatter Blocks

12 x 12" (305 x 305mm)  
1" (25mm) thick, Beveled Edge

Control Columns

12 x 36" (305 x 910mm)  
1.5" (40mm) thick, Beveled Edge

All necessary mounting hardware  
Available Finishes: Black, Beige, Grey, Paintable

x8

x4



IDEAL FOR ROOMS UP TO 100FT<sup>2</sup>



London 10

Scatter Blocks

12 x 12" (305 x 305mm)  
1" (25mm) thick, Beveled Edge

Control Columns

12 x 48" (305 x 1,219mm)  
2" (51mm) thick, Beveled Edge

All necessary mounting hardware  
Available Finishes: Black, Beige, Grey, Paintable

x12

x8



IDEAL FOR ROOMS UP TO 120FT<sup>2</sup>



London 12

Scatter Blocks

12 x 12" (305 x 305mm)  
1" (25mm) thick, Beveled Edge

Control Columns

12 x 48" (305 x 1,219mm)  
2" (51mm) thick, Beveled Edge

Broadband Absorbers

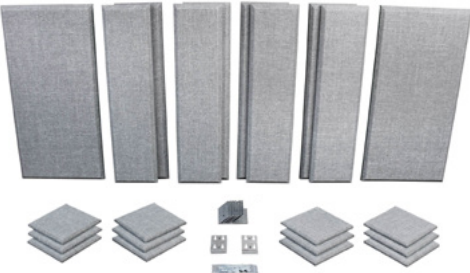
24 x 48" (610 x 1,219mm)  
2" (51mm) thick, Beveled Edge

All necessary mounting hardware  
Available Finishes: Black, Grey, Paintable

x12

x8

x2



IDEAL FOR ROOMS UP TO 150FT<sup>2</sup>



London 16

Scatter Blocks

12 x 12" (305 x 305mm)  
1" (25mm) thick, Beveled Edge

Control Columns

12 x 48" (305 x 1,219mm)  
2" (51mm) thick, Beveled Edge

Broadband Absorbers

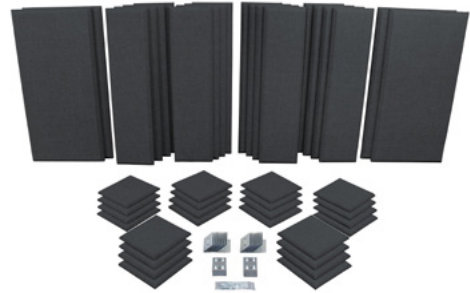
24 x 48" (610 x 1,219mm)  
2" (51mm) thick, Beveled Edge

All necessary mounting hardware  
Available Finishes: Black, Grey

x24

x16

x4

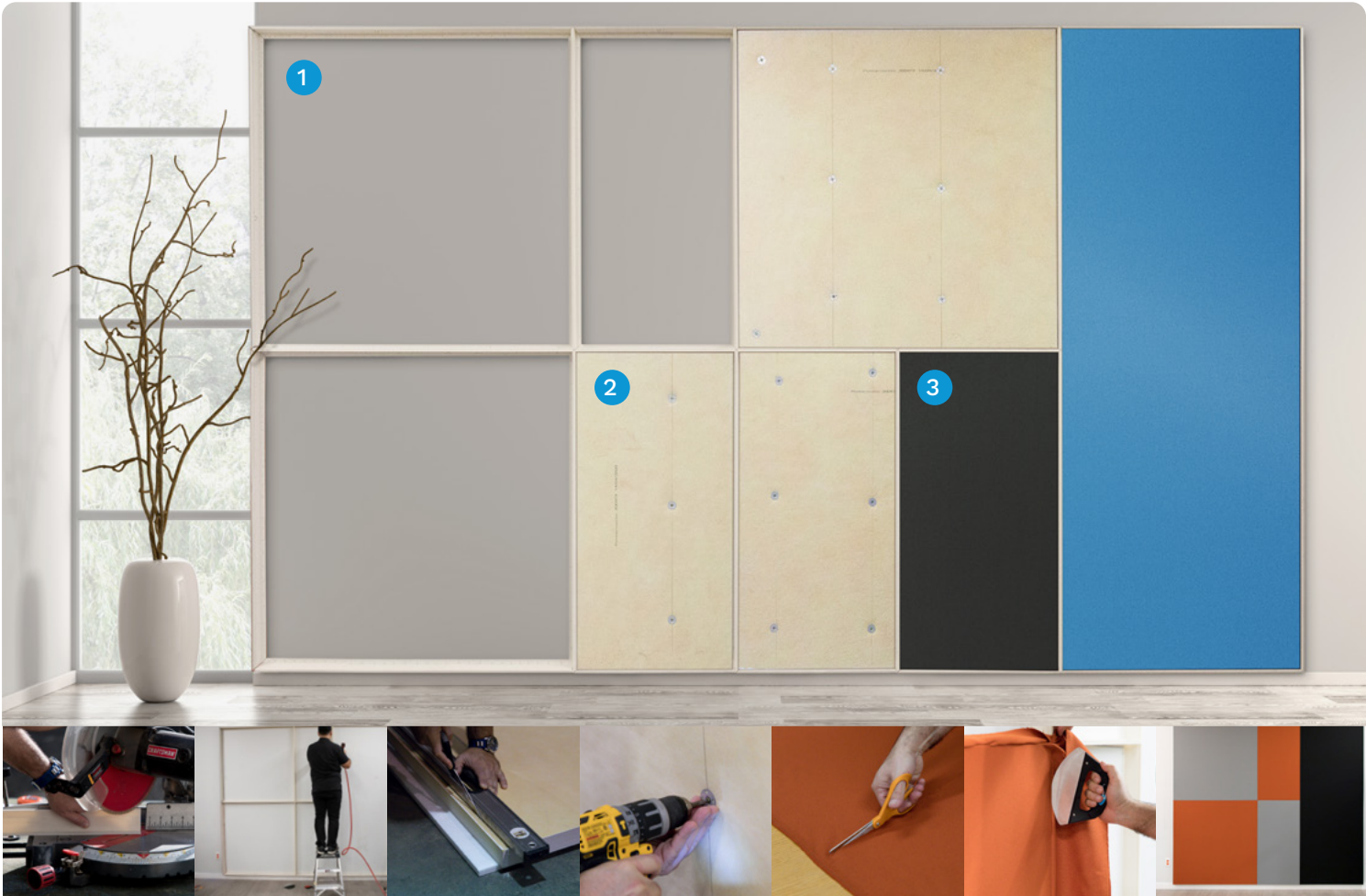


IDEAL FOR ROOMS UP TO 200FT<sup>2</sup>



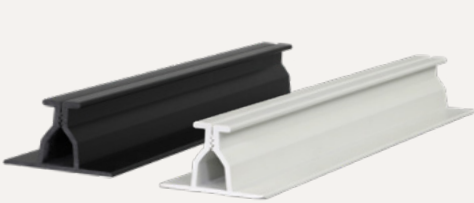


A full customizable acoustic treatment system consisting of three main components: either Broadband filler panels (made of high density glass wool) or eco-friendly TelaFill PET panels, a modular track system that includes both perimeter and mid-wall track pieces, and a selection of stretch fabric available in a wide range of colours. TelaScapes is designed to provide a high level of sound absorption in all environments, while also allowing for custom panel designs.

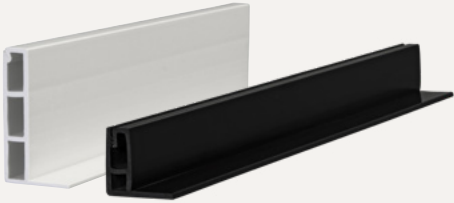


### 1. Track System

The TelaScapes track system includes Perimeter Tracks for outside edges and Mid-Wall Tracks for joining two sections of panelling together. Both of these track types accommodate fabric and either of our fill material options. The durable track is built from recyclable PVC or recycled uPVC, and can be cut to size if needed. Light and dark colour options are also available for the track itself, so the track edges can blend seamlessly with the chosen fabric and surrounding décor.



**Mid-Wall Track**  
1" (25mm) or 2" (51mm) thick  
48" (1,219mm) or 96" (2,438mm) long  
PVC or 100% recycled uPVC  
Available Finishes: Black, White, Neutral



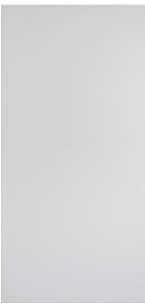
**Perimeter Track**  
1" (25mm) or 2" (51mm) thick  
48" (1,219mm) or 96" (2,438mm) long  
100% recycled uPVC  
Available Finishes: Black, White

### 2. Choice of Fill Material

Choose between two filler options, depending on your requirements. Broadband Raw high density glass wool acoustic panels are designed to provide a high level of sound absorption in large rooms. TelaFill panels are made from the same post-consumer, eco-friendly PET as Primacoustic's EcoScapes range. Go beyond absorption with an extra layer of soundproofing with PrimaBlock loaded mass vinyl.



**Broadband Raw Panel**  
48x48" (1,219x1,219mm)  
2" (51mm) thick Glass Wool



**TelaFill PET Panel**  
24x48" (610x1,219mm)  
or 48x96" (1,219x1,845mm)  
1" (25mm) thick PET

### 3. Choose your Fabric

Quality fabric to complete your TelaScapes acoustic treatment track and panel system. Available in a wide array of colours, provided by Primacoustic partner Guilford of Maine, a manufacturer of biodegradable fabrics and textiles. The standard Broadway fabric colours are also available.

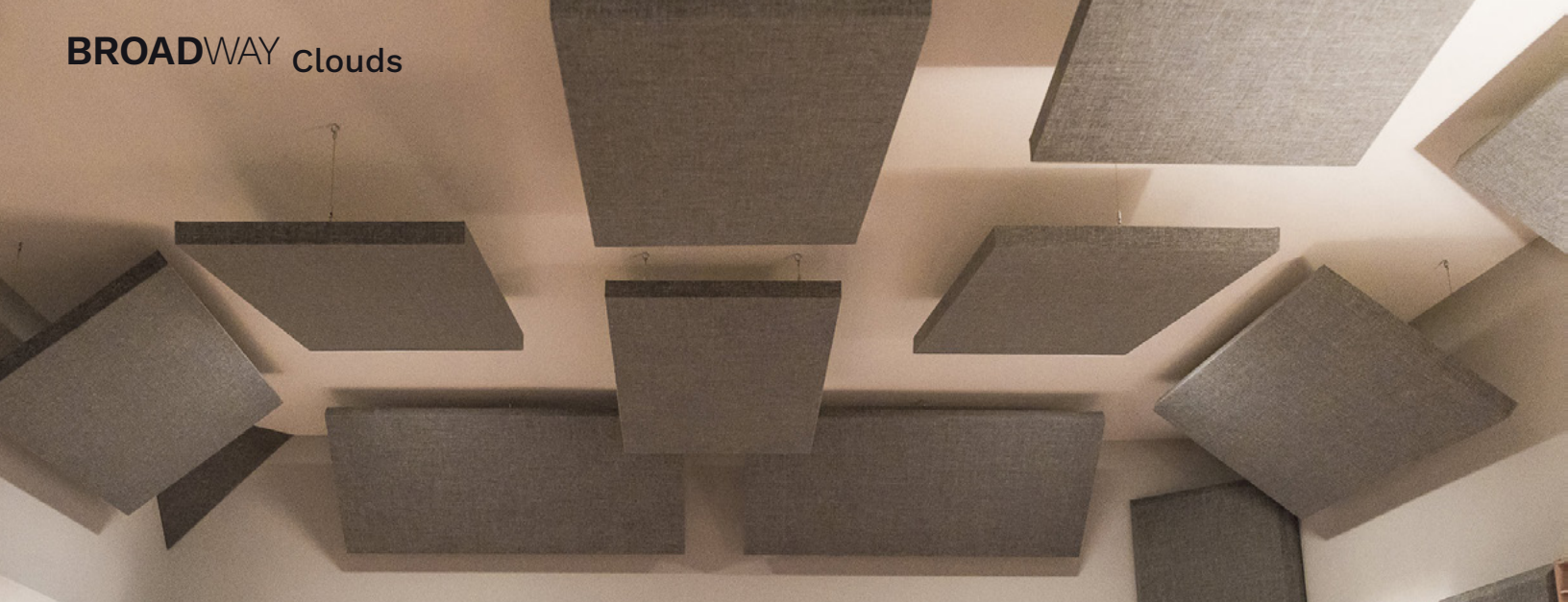


#### Tools & Hardware

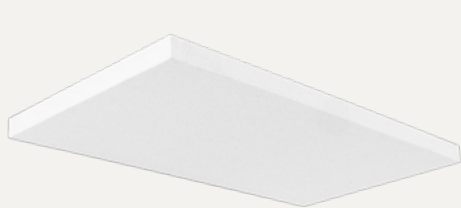
Tools designed for tucking fabric in the TelaScapes track system. Including the TelaRocker, which features a curved blade and handle for tucking large sections of fabric, and both 2" and 5" finishing tools for more precise corners and joints.







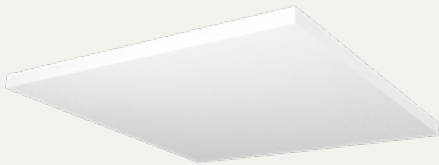
Every aspect of a room or space — walls, floor, and especially the ceiling — can contribute to problematic acoustic reflections, echoes, reverb, and other room anomalies. Enter Broadway Clouds, the perfect multi-shape panel solution for taming ceiling sound wave reflections. Broadway Clouds hang from the ceiling, capturing reflections by absorbing sound as it hits the face of the panel, trapping reflections on the back side.



Nimbus

24 x 48" (610 x 1,219mm)  
1.5" (38mm) thick, Square Edge

Available Finishes: Black, Arctic White, Grey, Paintable



Altos

36 x 36" (914 x 914mm)  
1.5" (38mm) thick, Square Edge

48 x 48" (1,219 x 1,219mm)  
1.5" (38mm) thick, Square Edge

Available Finishes: Arctic White, Paintable



Halo

36 x 36" (914 x 914mm)  
1.5" (38mm) thick, Square Edge

48 x 48" (1,219 x 1,219mm)  
1.5" (38mm) thick, Square Edge



Available in Paintable finish only



Hexus

48 x 48" (1,219 x 1,219mm)  
1.5" (38mm) thick, Square Edge

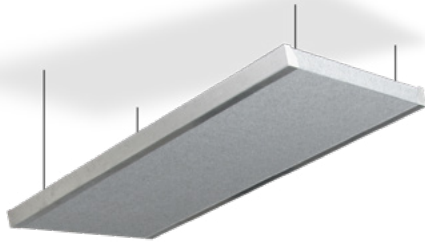


Available in Paintable finish only

Primacoustic Cloud kits include all the hardware necessary for installation

Stratus Studio Clouds

The position directly behind your console is where you'll spend the most time, honing your craft. Stratus ceiling clouds are designed to hang directly over this area and enlarge the studio “sweet spot,” creating a more intimate work space with less room ambience and fewer echoes. Stratus clouds combine high-density Broadway panels with aluminum side channels, mounted on a rigid frame which can be used to link multiple units together securely.



Stratus

24 x 48" (610 x 1,219mm)  
2" (51mm) thick, Square Edge

Available Finishes: Black, Grey, Paintable



Stratus Clouds include all the hardware necessary for installation



Diffusers

Go beyond absorption by managing reflections with diffusers. Create more air in a your studio by redirecting sound to create a more balanced room.

FlexiFuser

A wall-mountable acoustic solution featuring six variable pitch slats that can be rotated or set in position to redirect sound energy away from the primary listening space. Behind the slats is a high density 6lb glass-wool panel to help eliminate any internal resonance while further absorbing unwanted room reflections.



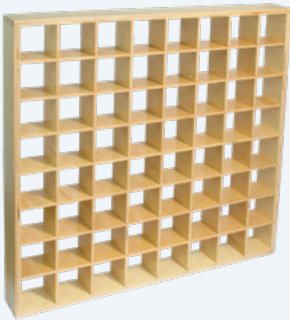
FlexiFuser

24 x 48 x 8" (610 x 1,219 x 203mm)  
2" (51mm) thick panel, Baltic Birch plywood



Radiator

An acoustic solution that can be mounted on walls and ceilings to help eliminate standing waves and powerful reflections through diffusion. The radiator features 64 Baltic birch cubicles that break up sound energy and scatters it around the room, reflecting back in multiple directions. Multiple radiators can also be linked together.



Radiator

24 x 24 x 3" (610 x 610 x 76mm)  
Baltic Birch



Primacoustic Diffusers include all the hardware necessary for installation



Bass Traps



It's well known that the most difficult frequencies to control in any space are in the deep low bass region. These frequencies tend to build up in the corners of a room, leading to inconsistent sound, depending on where you are positioned. Primacoustic bass traps help you control the bass in any room, absorbing low frequencies as they enter the room corner.

Cumulus

This tri-corner bass trap is designed to be mounted high in ceiling corners. This creates a deep air cavity behind the panel, resulting in broadband sound absorption, and taming problematic low-mid resonances.



Cumulus

24 x 24" (610 x 610mm)  
2" (51mm) thick panel, Reverse Beveled Edge  
Available Finishes: Black, Grey



London Bass Trap

24 x 48" (610 x 1,219mm)  
2" (51mm) thick panel, Beveled  
Available Finishes: Black, Beige, Grey, Paintable



London Bass Trap

High density glass wool panels designed to absorb low frequencies. Easily mountable in room corners.

FullTrap

A wall-mountable bass trap combining a high performance glass wool panel, with an internal suspended diaphragm to extend bass response - providing 3-way sound absorption through the full frequency spectrum.



FullTrap

24 x 48" (610 x 1,219mm)  
3" (76mm) thick panel, Beveled, MDF Frame  
Available Finishes: Black, Beige, Grey



MaxTrap

24 x 48" (610 x 1,219mm)  
3" (76mm) thick panel, Beveled, MDF Frame  
Available Finishes: Black, Beige, Grey



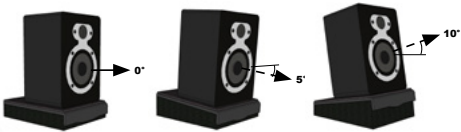
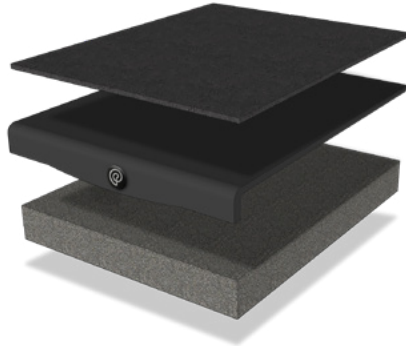
MaxTrap

A corner-mountable version of the FullTrap, which creates an even deeper cavity behind the panel, absorbing more bass.

Recoil Stabilizers



The Recoil Stabilizer is a nearfield monitor platform that incorporates four different elements. A thin no-slip neoprene surface to secure the monitor to the top surface, a laser cut 1/4" (6mm) steel platform to rigidly hold the nearfield monitor in place, a curved front panel to eliminate standing waves and add mass to the platform without increasing the footprint, and high density open cell acoustic foam to provide acoustic isolation and eliminate coupling between loudspeaker and shelf.



RX5

7.9 x 9.5" (190 x 241mm)  
Horizontal / 5° Down-Fire / 10° Up-Fire  
32lb (15kg) load limit

RX9

15 x 11" (381 x 279mm)  
Horizontal / 5° Down-Fire  
50lb (22kg) load limit

RX17

17 x 17" (432 x 432mm)  
Horizontal  
88lb (40kg) load limit

"The Primacoustic panels, bass traps and diffusers are up and kicking butt in my new studio. I love the way the control room and tracking room sound now... and so does everyone that records here!"

Butch Walker  
Engineer / Producer

"When I began using the Recoil Stabilizer I immediately noticed improvements in the low end clarity of my near field monitors, to the point that I no longer needed to use a separate subwoofer."

Chuck Ainlay  
Producer / Engineer

"I've been using the Recoils and dig them a lot. It's like a veil has been lifted from my speakers. There is a clarity to the mids and a deep focus to the lows. I can almost see the sound now."

Ulrich Wild  
Engineer / Producer



RX7

10.5 x 13" (263 x 330mm)  
Horizontal / 5° Down-Fire / 10° Up-Fire  
44lb (20kg) load limit

RX12

20 x 13" (508 x 330mm)  
Horizontal / 5° Down-Fire  
88lb (40kg) load limit

RX20

23 x 20" (559 x 508mm)  
Horizontal  
144lb (65kg) load limit

Primacoustic Bass Traps include all the hardware necessary for installation





FlexiBooth

A wall-mountable acoustic solution designed to act as a portable vocal recording booth. The outer shell is constructed using heavy black MDF board. When open, it exposes three Broadway acoustic panels. An air gap behind the main panel further extends low frequency absorption.

GoTrap

A portable studio Gobo and bass trap made from Baltic birch and two sound absorbing Broadway acoustic panels. An internal MDF board adds mass to help contain spill between instruments and acts like a low frequency resonator to absorb more bass.



**FlexiBooth**  
4 x 24 x 48" (102 x 610 x 1,219mm)  
Main Panel: 2" (51mm) thick,  
Outer Panels: 1" (25mm) thick  
Black laminated MDF frame  
Available Finishes: Beige, Grey



**GoTrap**  
10 x 36 x 24" (254 x 914 x 610mm)  
2" (51mm) thick panels,  
Baltic Birch plywood frame  
Available Finishes: Black, Beige, Grey



FlexiBooth kit includes all the hardware necessary for installation

VoxGuard

A near field vocal screen designed to reduce the ambiance around a microphone when recording a voice. Made from an ABS plastic shell baffle and 1" high-density open cell acoustic foam. Available in two different models, with the VoxGuard VU featuring a threaded mic stand adaptor, while the VoxGuard DT is designed to sit flush on a desktop.



**VoxGuard VU**  
7.5 x 18 x 15" (191 x 457 x 381mm)  
ABS Plastic Shell,  
1" (25mm) High Density Acoustic Foam



**VoxGuard DT**  
7.5 x 14 x 12" (191 x 356 x 305mm)  
ABS Plastic Shell,  
1" (25mm) High Density Acoustic Foam

CrashGuard

The CrashGuard is a sound-shielding device that mounts to the boom stand, preventing bleed from cymbals and other sounds from entering the drum microphone. Constructed from high-impact ABS to protect microphones, and a high-density open cell foam underbelly to absorb internal reflections and reduce phase cancellation. Available in two models, with the CrashGuard 421 specially designed to fit the Sennheiser MD421 microphone.



**CrashGuard**  
ABS Plastic Shell,  
High Density Acoustic Foam



**CrashGuard 421**  
ABS Plastic Shell,  
High Density Acoustic Foam



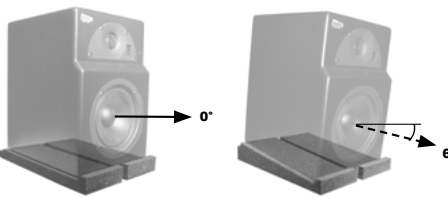
**TriPads**  
4 x 2.3" (102 x 58mm)  
High Density Acoustic Foam

Foam isolation pads designed to be placed on the feet of mic stands, preventing resonant sound vibrations that can travel from the floor through the mic stand and end up in the final recording.



**KickStand**  
4 x 7.3 x 9.5" (102 x 185 x 241mm)  
High Density Acoustic Foam

A heavy microphone boom-arm isolator that combines a steel stabilizing base with a high-density isolation pad to eliminate unwanted resonance from the stage, drum riser and studio floor from entering the kick drum microphone.



**IsoPlane**  
1.5 x 12 x 4" (38 x 305 x 102mm)  
High Density Polyurethane Foam  
**IsoWedge**  
2 x 12 x 4" (51 x 305 x 102mm)  
High Density Polyurethane Foam

High density foam panels designed to be placed under studio speakers. Effectively isolating the sound from the speaker so that it won't resonate with the desk or shelf during playback and mixing.





## Helping you find the Answers and Solutions you need

Your space and your acoustic needs are specific to you. If you're new to acoustic treatment or have a sound quality challenge to solve, Primacoustic has the tools to help you find the best solution. Whether this is your hundredth install, or your first time choosing acoustic treatment, we've made it easy to find the right solution for any room. If you're not sure which panels you need, where to buy, or how to install, we can help you to get started.



### PrimaPro Calculator

Get instant product recommendations for your room. Simply enter a few details about the room and the app will generate a personalized quote.



### PrimaPro Designer

Have an idea you want to visualize? Build your own custom solution and see it in 3D with our easy to use PrimaPro Designer App.



### Free Quote

If you still need help finding the right products, reach out to us on the Free Quote form on our website and one of our experts will be happy to assist you.

[Visit primacoustic.com](https://www.primacoustic.com) to learn more

## Ready to Be Heard?

In addition to our range of studio products, Primacoustic offers acoustics solutions for all types of spaces, big or small. Visit our website to see our full product offering and get educational resources and inspiration for your project.

If you have any specific questions, our expert team is available to answer any questions you have. Email [info@primacoustic.com](mailto:info@primacoustic.com) or give us a call at (604) 942-1001.

[www.primacoustic.com](https://www.primacoustic.com)

