

1512 S BATAVIA AVENUE  
GENEVA, IL 60134  
630-232-0104

## Test Report

[www.riverbankacoustics.com](http://www.riverbankacoustics.com)

FOUNDED 1918 BY  
WALLACE CLEMENT SABINE

SPONSOR: **Primacoustic, a Division of Radial Engineering Ltd.**  
Port Coquitlam, BC, Canada

**Sound Absorption**  
**RAL™-A23-089**

CONDUCTED: 2023-04-11

Page 1 of 9

ON: ECOScapes - PET Panels

### TEST METHODOLOGY

Riverbank Acoustical Laboratories™ is accredited by the U.S. Department of Commerce, National Institute of Standards and Technology (NIST) under the National Voluntary Laboratory Accreditation Program (NVLAP) as an ISO 17025:2017 Laboratory (NVLAP Lab Code: 100227-0) and for this test procedure. The test reported in this document conformed explicitly with ASTM C423-22: "Standard Test Method for Sound Absorption and Sound Absorption Coefficients by the Reverberation Room Method." The specimen mounting was performed according to ASTM E795-23: "Standard Practices for Mounting Test Specimens During Sound Absorption Tests." A description of the measurement procedure and room specifications are available upon request. The results presented in this report apply to the sample as received from the test sponsor.

### INFORMATION PROVIDED BY SPONSOR

The test specimen was designated by the sponsor as ECOScapes - PET Panels. The following nominal product information was provided by the sponsor prior to testing. The accuracy of such sponsor-provided information can affect the validity of the test results.

#### **Product Under Test**

Product Name: ECOScapes PET Panels  
Manufacturer: Primacoustic, a Division of Radial Engineering Ltd.

### SPECIMEN MEASUREMENTS & TEST CONDITIONS

Through a full external visual inspection performed on the test specimen, Riverbank personnel verified the following information:

#### **Test Specimen**

Material: PET felt panels  
Dimensions: 8 panels @ 600 mm (23.625 in.) by 1199 mm (47.1875 in.)  
2 panels @ 343 mm (13.5 in.) by 1199 mm (47.1875 in.)  
Thickness: 24.16 mm (0.951 in.)  
Overall Weight: 24.61 kg (54.25 lbs)  
Mass per Unit Volume: 155 kg/m<sup>3</sup> (9.67 lbs/ft<sup>3</sup>)

1512 S BATAVIA AVENUE  
GENEVA, IL 60134  
630-232-0104

## Test Report

[www.riverbankacoustics.com](http://www.riverbankacoustics.com)

FOUNDED 1918 BY  
WALLACE CLEMENT SABINE

**Primacoustic, a Division of Radial Engineering Ltd.**  
2023-04-11

**RAL™-A23-089**  
Page 2 of 9

### Overall Specimen Properties

Size: 2.74 m (108.0 in) wide by 2.4 m (94.375 in) long  
Thickness: 0.02 m (0.951 in)  
Weight: 24.61 kg (54.25 lbs)  
Mass per Unit Area: 3.74 kg/m<sup>2</sup> (0.77 lbs/ft<sup>2</sup>)  
Calculation Area: 6.576 m<sup>2</sup> (70.78 ft<sup>2</sup>)

### Test Environment

Room Volume: 291.98 m<sup>3</sup>  
Temperature: 20.4 °C ± 0.1 °C (Requirement: ≥ 10 °C and ≤ 5 °C change)  
Relative Humidity: 60.3 % ± 2.8 % (Requirement: ≥ 40 % and ≤ 5 % change)  
Barometric Pressure: 99.5 kPa (Requirement not defined)

### MOUNTING METHOD

Type D-20 Mounting: The test specimen was mounted on 19.05 mm (0.75 in.) thick wood furring strips spaced 305 mm (12 in.) on centers and laid directly against the test surface. The furring strips produced a 19.05 mm (0.75 in.) thick air space behind the test specimen. Perimeter edges were sealed with metal framing and tape.

1512 S BATAVIA AVENUE  
GENEVA, IL 60134  
630-232-0104

## Test Report

[www.riverbankacoustics.com](http://www.riverbankacoustics.com)

FOUNDED 1918 BY  
WALLACE CLEMENT SABINE

**Primacoustic, a Division of Radial Engineering Ltd.**  
2023-04-11

**RAL™-A23-089**

Page 3 of 9

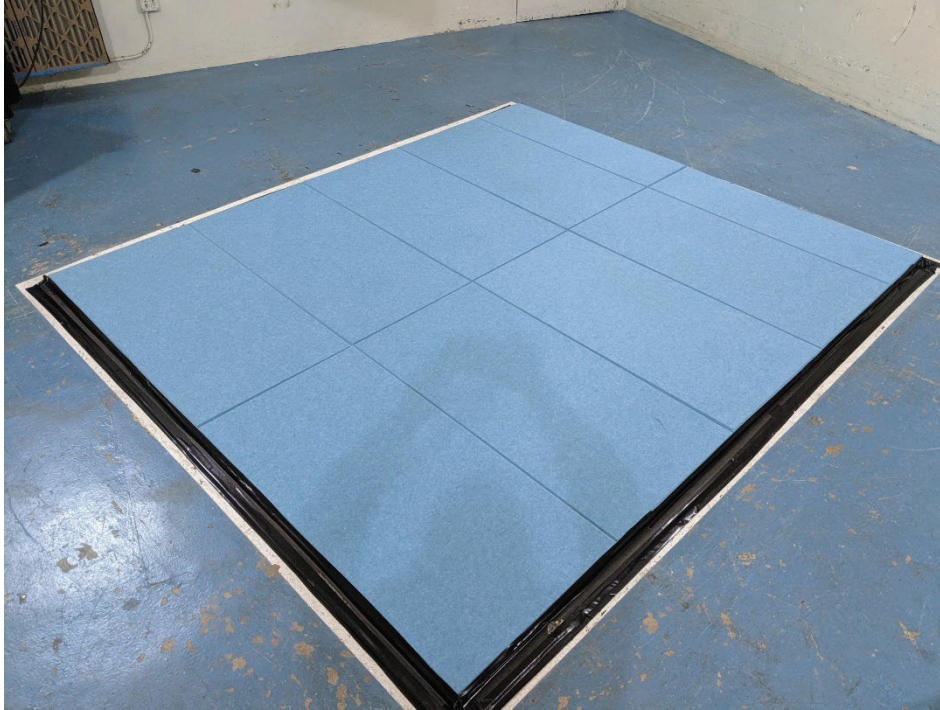


Figure 1 – Specimen mounted in test chamber

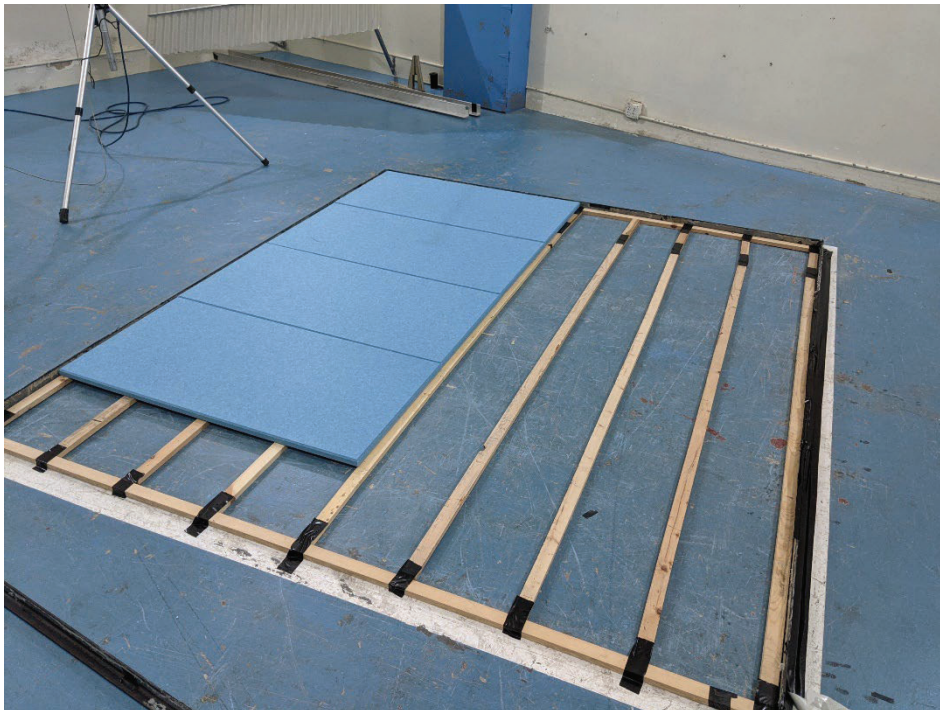


Figure 2 – Specimen panels partially installed over wood furring strips



1512 S BATAVIA AVENUE  
GENEVA, IL 60134  
630-232-0104

## Test Report

[www.riverbankacoustics.com](http://www.riverbankacoustics.com)

FOUNDED 1918 BY  
WALLACE CLEMENT SABINE

**Primacoustic, a Division of Radial Engineering Ltd.**  
2023-04-11

**RAL™-A23-089**

Page 4 of 9



Figure 3 – Detail of specimen material

1512 S BATAVIA AVENUE  
GENEVA, IL 60134  
630-232-0104

## Test Report

[www.riverbankacoustics.com](http://www.riverbankacoustics.com)

FOUNDED 1918 BY  
WALLACE CLEMENT SABINE

**Primacoustic, a Division of Radial Engineering Ltd.**  
2023-04-11

**RAL™-A23-089**  
Page 5 of 9

### TEST RESULTS

Specimen total absorption and absorption coefficient are tabulated at the eighteen standard frequencies.  
A graphic presentation of the data and additional information appear on the following pages.

1/3 Octave Center Frequency (Hz)	Total Absorption (m <sup>2</sup> )	Total Absorption (Sabins)	Absorption Coefficient
100	0.80	8.58	0.12
** 125	0.87	9.32	0.13
160	1.38	14.82	0.21
200	1.73	18.66	0.26
** 250	2.35	25.25	0.36
315	3.75	40.39	0.57
400	4.62	49.73	0.70
** 500	5.88	63.25	0.89
630	6.36	68.47	0.97
800	7.14	76.82	1.09
** 1000	7.42	79.86	1.13
1250	7.43	79.97	1.13
1600	7.20	77.48	1.09
** 2000	7.04	75.80	1.07
2500	6.81	73.25	1.03
3150	6.53	70.28	0.99
** 4000	6.57	70.68	1.00
5000	6.54	70.36	0.99

**SAA = 0.86**  
**NRC = 0.85**

1512 S BATAVIA AVENUE  
GENEVA, IL 60134  
630-232-0104

## Test Report

[www.riverbankacoustics.com](http://www.riverbankacoustics.com)

FOUNDED 1918 BY  
WALLACE CLEMENT SABINE

**Primacoustic, a Division of Radial Engineering Ltd.**  
2023-04-11

**RAL™-A23-089**  
Page 6 of 9

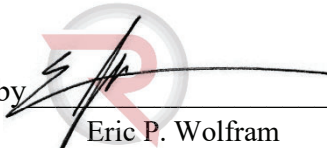
### TEST RESULTS (continued)

The sound absorption average (SAA) is defined in ASTM C423-17 Section 3.1.1 as the arithmetic average of the sound absorption coefficients of a material for the twelve one-third octave bands from 200 Hz through 2500 Hz, inclusive, rounded to the nearest integer multiple of 0.01.

The noise reduction coefficient (NRC) is defined from previous versions of ASTM C423 as the arithmetic average of the sound absorption coefficients at 250 Hz, 500 Hz, 1000 Hz, and 2000 Hz, rounded to the nearest integer multiple of 0.05.

Tested by   
Marc Sciaky  
Senior Experimentalist

Report by   
Keith Kimberling  
Test Engineer

Approved by   
Eric P. Wolfram  
Laboratory Manager

Digitally signed by  
Eric P Wolfram  
Date: 2023.04.21  
09:09:56 -05'00'

1512 S BATAVIA AVENUE  
GENEVA, IL 60134  
630-232-0104

Test Report

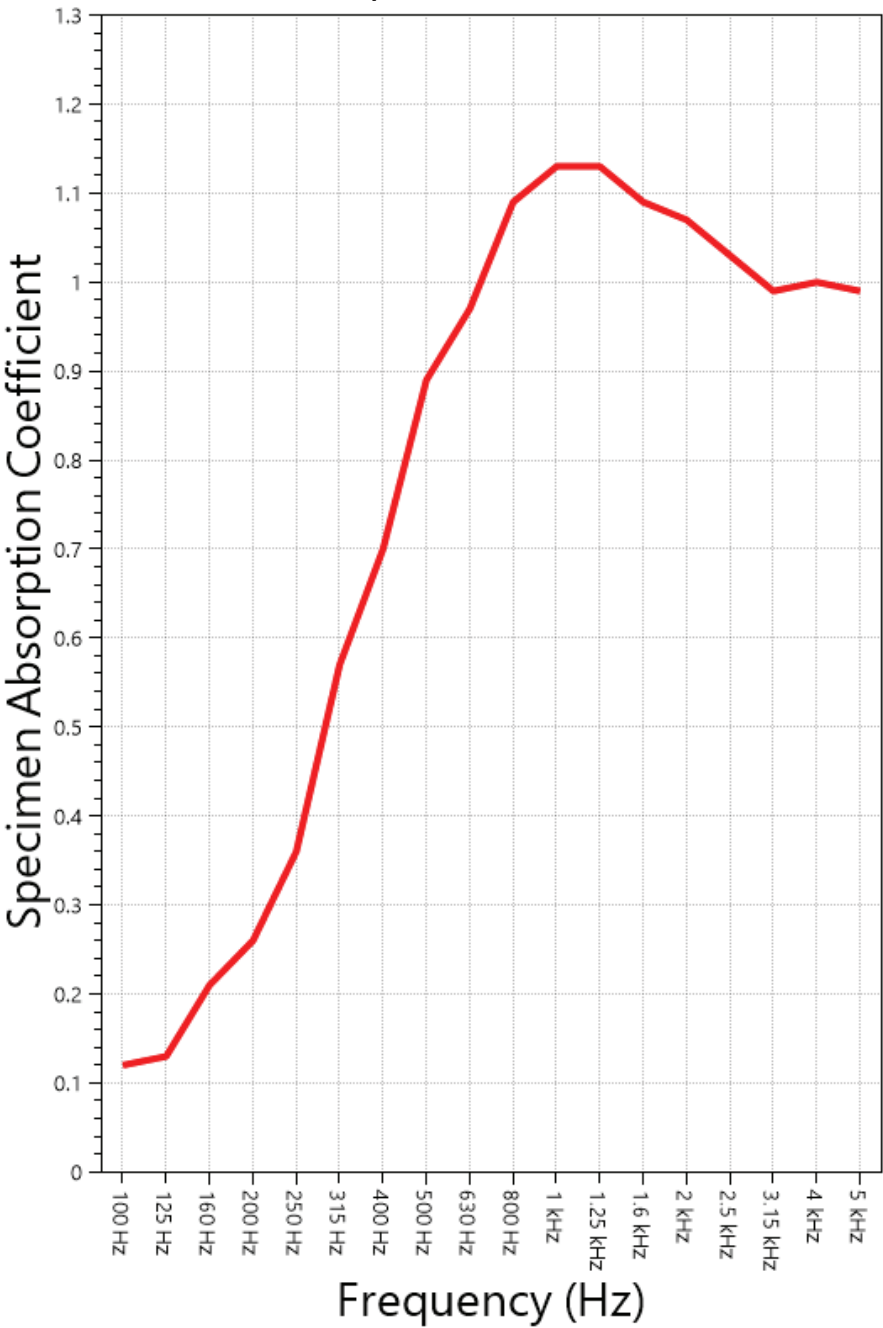
[www.riverbankacoustics.com](http://www.riverbankacoustics.com)

FOUNDED 1918 BY  
WALLACE CLEMENT SABINE

Primacoustic, a Division of Radial Engineering Ltd.  
2023-04-11

**RAL™-A23-089**  
Page 7 of 9

**SOUND ABSORPTION REPORT**  
ECOScapes - PET Panels



**SAA = 0.86**  
**NRC = 0.85**



1512 S BATAVIA AVENUE  
GENEVA, IL 60134  
630-232-0104

## Test Report

[www.riverbankacoustics.com](http://www.riverbankacoustics.com)

FOUNDED 1918 BY  
WALLACE CLEMENT SABINE

Primacoustic, a Division of Radial Engineering Ltd.  
2023-04-11

**RAL™-A23-089**  
Page 8 of 9

### **APPENDIX A: Extended Frequency Range Data**

Specimen: ECOScapes - PET Panels (See Full Report)

*The following non-accredited data were obtained in accordance with ASTM C423-22, but extend beyond the defined frequency range of 100Hz to 5,000Hz. These unofficial results are representative of the RAL test environment only and intended for research & comparison purposes.*

1/3 Octave Band Center Frequency (Hz)	Total Absorption (Sabins)	Absorption Coefficient
31.5	-6.72	-0.10
40	3.29	0.05
50	5.49	0.08
63	-0.36	-0.01
80	4.13	0.06
100	8.58	0.12
125	9.32	0.13
160	14.82	0.21
200	18.66	0.26
250	25.25	0.36
315	40.39	0.57
400	49.73	0.70
500	63.25	0.89
630	68.47	0.97
800	76.82	1.09
1000	79.86	1.13
1250	79.97	1.13
1600	77.48	1.09
2000	75.80	1.07
2500	73.25	1.03
3150	70.28	0.99
4000	70.68	1.00
5000	70.36	0.99
6300	66.86	0.94
8000	58.59	0.83
10000	57.40	0.81
12500	47.14	0.67



1512 S BATAVIA AVENUE  
GENEVA, IL 60134  
630-232-0104

Test Report

[www.riverbankacoustics.com](http://www.riverbankacoustics.com)

FOUNDED 1918 BY  
WALLACE CLEMENT SABINE

Primacoustic, a Division of Radial Engineering Ltd.  
2023-04-11

**RAL™-A23-089**  
Page 9 of 9

**APPENDIX B: Instruments of Traceability**

Specimen: ECOScapes - PET Panels (See Full Report)

<u>Description</u>	<u>Model</u>	<u>Serial Number</u>	<u>Date of Certification</u>	<u>Calibration Due</u>
System 1	Type 3160-A-042	3160-106968	2022-07-12	2023-07-12
Bruel & Kjaer Mic And Preamp D	Type 4943-B-001	2311440	2022-09-28	2023-09-28
Bruel & Kjaer Pistonphone	Type 4228	2781248	2022-07-22	2023-07-22
EXTECH Hygro 639	SD700	A.103639	2022-12-07	2023-12-07

**APPENDIX C: Revisions to Original Test Report**

Specimen: ECOScapes - PET Panels (See Full Report)

<u>Date</u>	<u>Revision</u>
2023-04-18	Original report issued

---

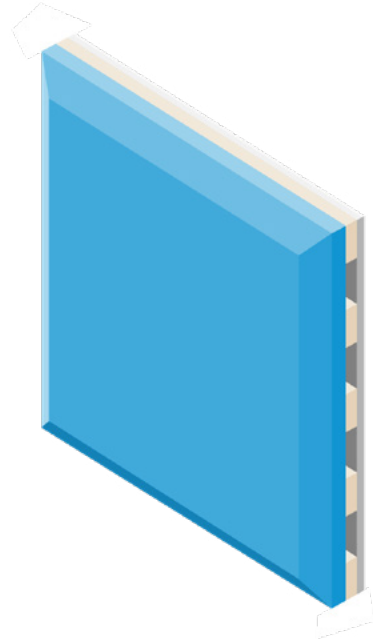
END

# Mounting Types Explained



## A Mount

Panel is mounted directly to wall.



## D20 Mount

Panel is mounted on  $\frac{3}{4}$ " thick furring strips, spaced 12" apart. Cavities are left empty.