

# STRATUS

The Stratus is a precision crafted 24 x 48 x 2" (610mm x 1219mm x 57mm) acoustic cloud that is positioned above the listening area to eliminate ceiling to floor standing waves, early reflections and flutter echo. When installed, the Stratus delivers greater intimacy, a larger sweet spot and better stereo imaging.

The modular design comes complete with aluminum side rails that create a high-tech finished look, and allow several Stratus kits to be connected to form a large, continuous cloud. The Stratus is available in black, beige or grey fabric or in Absolute White™ paintable finish with an aluminum frame.

**SPECIFICATIONS:**

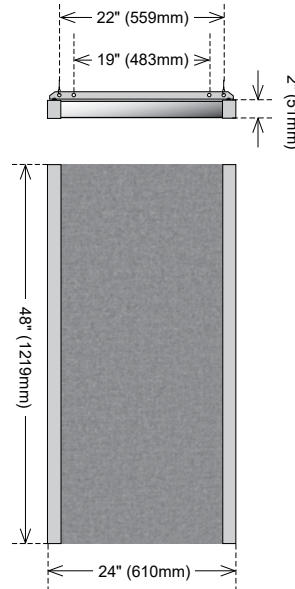
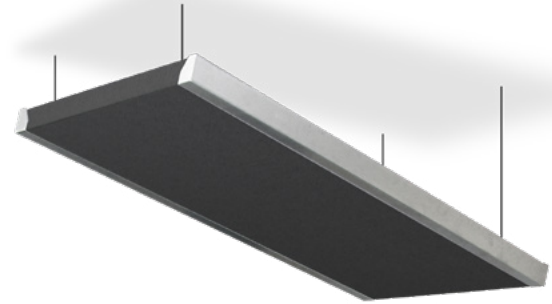
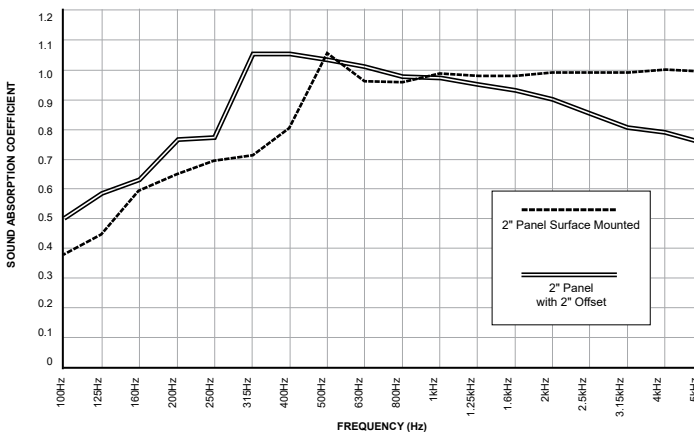
|                              |   |
|------------------------------|---|
| <b>ORDER NUMBER</b>          | Z840-1200-XX (xx denotes color code 00=Black; 03= Beige; 08=Grey; 09=White)                         |
| <b>FRAME MATERIAL</b>        | Formed 16-gauge aluminum  |
| <b>DIMENSIONS</b>            | 24 x 48" (610 x 1219mm)   |
| <b>PANEL DEPTH</b>           | 2" (51mm)   |
| <b>CORE MATERIAL DENSITY</b> | Formed, semi-rigid inorganic glass fibres, 6.0 lbs pcf (96 kg/m <sup>3</sup> )                      |
| <b>WEIGHT</b>                | 11.5 lbs (5.2 kg)   |
| <b>FACING</b>                | Acoustically transparent polyester or paintable glass wool tissue micromesh sealed with latex paint |
| <b>BACKING</b>               | Sealed with acoustically transparent micromesh  |
| <b>EDGE TREATMENT</b>        | Sealed and hardened with resin  |
| <b>RECYCLED CONTENT</b>      | Up to 51%   |
| <b>LEED ELIGIBLE</b>         | Yes   |

**ABSORPTION CHARACTERISTICS:\***

Sound absorption coefficient data

| PANEL DEPTH             | 125Hz | 250Hz | 500Hz | 1kHz | 2kHz | 4kHz | NRC  |
|-------------------------|-------|-------|-------|------|------|------|------|
| 2" (51mm) Depth*        | 0.45  | 0.83  | 1.07  | 1.00 | 1.01 | 1.00 | 1.00 |
| 2" (51mm) Offset 2" *** | 0.51  | .90   | 1.17  | 1.12 | 1.12 | 1.08 | 1.10 |

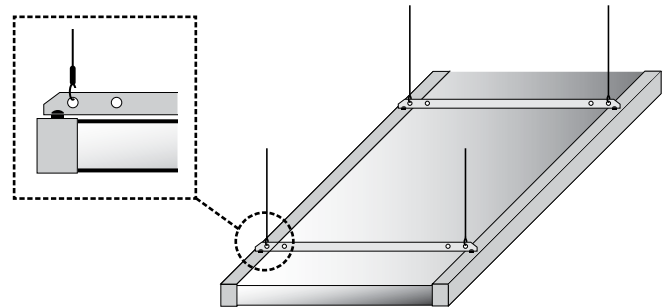
\* Testing performed by Riverbank Acoustical Laboratories. The test method conform explicitly with the requirements of the ASTM Standard Test Method for Sound Absorption and Sound Absorption Coefficients by the Reverberation Room Method: ASTM C 423-02a and E795-05.  
 \*\*\*Offset mounted to create an air space between the panel and ceiling.



- KIT COMPONENTS:**
- 24" x 48" Broadway panel
  - Two aluminum side clamps
  - Two cross bars
  - Assembly screws
  - Bracket to link units together
  - SlipNot suspension cables
  - Drywall/Masonry Anchors
  - Eye-hooks

**MOUNTING:**

All suspension hardware is included. Hanging is achieved with four eyelets in the cross bar members, ceiling anchors, eye-hooks and SlipNot suspension cables. We recommend the Stratus be mounted with a four point dead-hang. Extra eyelets can be used for anti-sway or safety lines.



**FIRE & BURN PERFORMANCE:**

| COUNTRY                 | TEST STANDARD   | CLASSIFICATION          |
|-------------------------|-----------------|-------------------------|
| <b>FABRIC WRAP</b>      |                 |                         |
| Canada                  | CAN/ULC-S102-03 | Class A/1               |
| USA                     | ASTM E84-09     | Class A/1               |
| Europe                  | EN 13501-1      | A2-s1, d0               |
| Australia / New Zealand | AS/NZS 1530.3   | (I)0, (S)0, (H)0, (Sm)5 |
| <b>PAINTABLE</b>        |                 |                         |
| Canada                  | CAN/ULC-S102-10 | Class A/1               |
| USA                     | ASTM E84-11b    | Class A/1               |
| Europe                  | EN 13501-1      | B-s2, d0                |
| Australia / New Zealand | AS/NZS 1530.3   | (I)0, (S)0, (H)0, (Sm)3 |