

RADIATOR

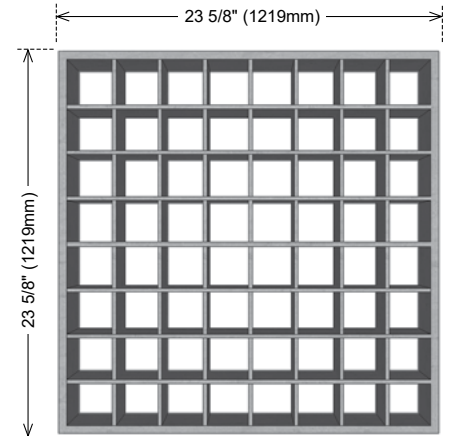
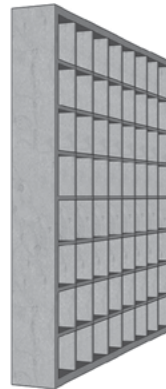
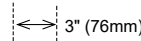
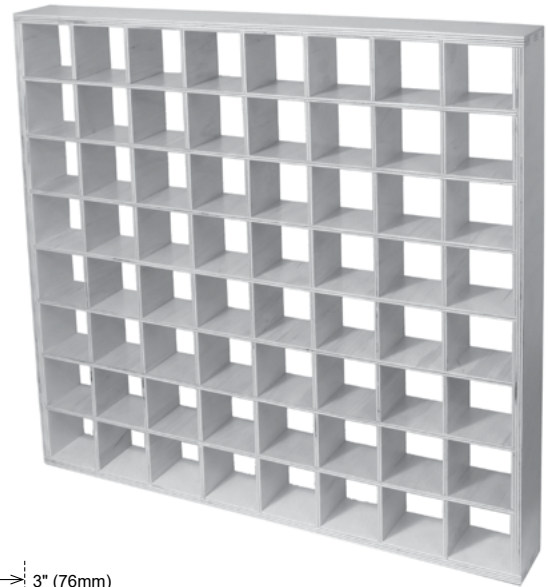
The Radiator is a 24 x 24" (610mm x 610mm) multi purpose diffuser used to break up high frequency sound energy in a variety of applications.

The Radiator can be installed into standard drop-ceiling grids to act as a portal to the plenum above, linked together and suspended from the ceiling using included coupling hardware or hung directly on the wall surface using hidden keyhole mounting locations on the frame. It can even be used in front of windows to eliminate reflections while maintaining natural light and sight lines.

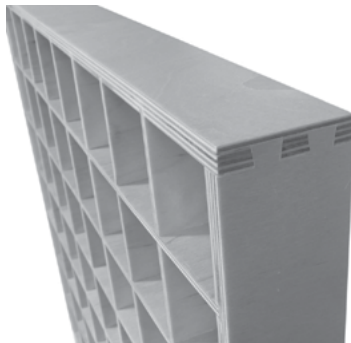
The Radiator ships assembled in a natural birch finish.

SPECIFICATIONS:

ORDER NUMBER	Z840-2500-00
EFFECTIVE FREQUENCY RANGE	565Hz to 2.2KHz
OUTER FRAME MATERIAL	Baltic Birch Plywood with locking dovetail corner joints. 0.5" (13mm) thick, lacquered natural wood finish
INNER CELL MATERIAL	Baltic Birch plywood 0.25" (6mm) thick. Lacquered natural wood finish
OUTER DIMENSION	23.74" x 23.74 x 3" (603 x 603 x 76mm) Fits T-Bar drop ceiling grids
CELL DIMENSION	2.64 x 2.64 x 3" (67 x 67 x 76mm)
WEIGHT	8.2 lbs (3.7 kg)
MOUNTING HARDWARE	Woodscrews and drywall anchors included for wall mounting. Coupling hardware allows Radiator to be bolted together to create diffusion arrays. Two coupling bolts included.



Clever 'keyhole' hardware for fast wall mounting.



Solid construction using dovetail joinery and baltic birch plywood.

APPLICATIONS:



Six Radiator diffusers are bolted together and suspended above the mix position in a studio control room.



Eight Radiator diffusers are bolted together and hung on the wall to create ambiance in the studio.



Radiator diffusers surround light fixtures in a hotel lobby ceiling.