

# NIMBUS

The Nimbus is an easy to use 24" x 48" x 1.5" (610mm x 1219mm x 38mm) acoustic cloud kit designed to attenuate ambient noise and control low, mid and high frequency reflections. The Nimbus is generally placed above an area where a reduction in sound level is desired such as restaurant tables, library reading zones or boardrooms.

When installed the Nimbus delivers greater intimacy and improved intelligibility in any space. Each Nimbus kit includes a fabric covered Broadway panel, SlipNot, Helix and all hardware required to attach to a ceiling. The Nimbus is available in black, beige or grey fabric or in Absolute White™ paintable finish.

**SPECIFICATIONS:**

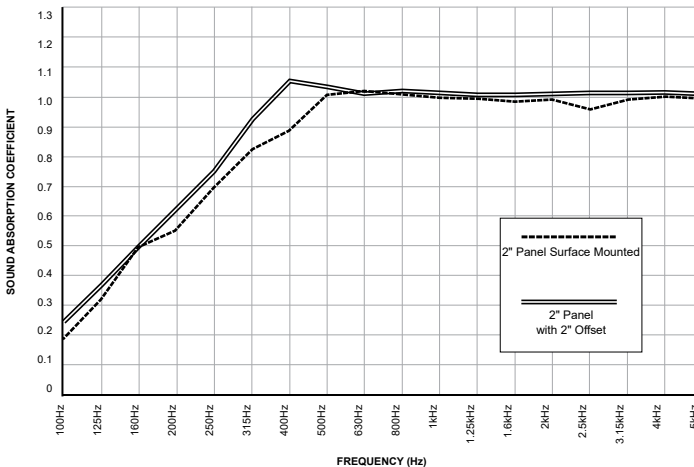
<b>ORDER NUMBER</b>	Z840-1225-XX (xx denotes color code 00=Black; 01=Arctic White; 03= Beige; 08=Grey; 09=White)
<b>DIMENSIONS</b>	24 x 48" (610 x 1219mm)
<b>PANEL DEPTH</b>	1.5" (38mm)
<b>CORE MATERIAL DENSITY</b>	Formed, semi-rigid inorganic glass fibres, 6.0 lbs pcf (96 kg/m3)
<b>WEIGHT</b>	8.3 lbs (3.8 kg)
<b>FACING</b>	Acoustically transparent polyester or paintable glass wool tissue micromesh sealed with latex paint
<b>BACKING</b>	Sealed with acoustically transparent micromesh
<b>EDGE TREATMENT</b>	Sealed and hardened with resin
<b>RECYCLED CONTENT</b>	Up to 51%
<b>LEED ELIGIBLE</b>	Yes

**ABSORPTION CHARACTERISTICS:\***

Sound absorption coefficient data

PANEL DEPTH	125Hz	250Hz	500Hz	1kHz	2kHz	4kHz	NRC
1.5" (38mm) Depth*	0.31	0.67	1.01	1.00	1.01	1.00	0.98
1.5" (38mm) Offset 2"***	0.37	0.74	1.11	1.12	1.12	1.06	1.05

\* Testing performed by Riverbank Acoustical Laboratories. The test method conform explicitly with the requirements of the ASTM Standard Test Method for Sound Absorption and Sound Absorption Coefficients by the Reverberation Room Method: ASTM C 423-02a and E795-05.  
 \*\*\* Offset mounted to create an air space between the panel and ceiling.



**INCLUDED HARDWARE:**

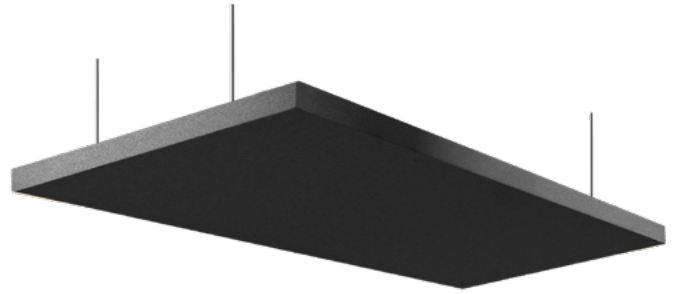
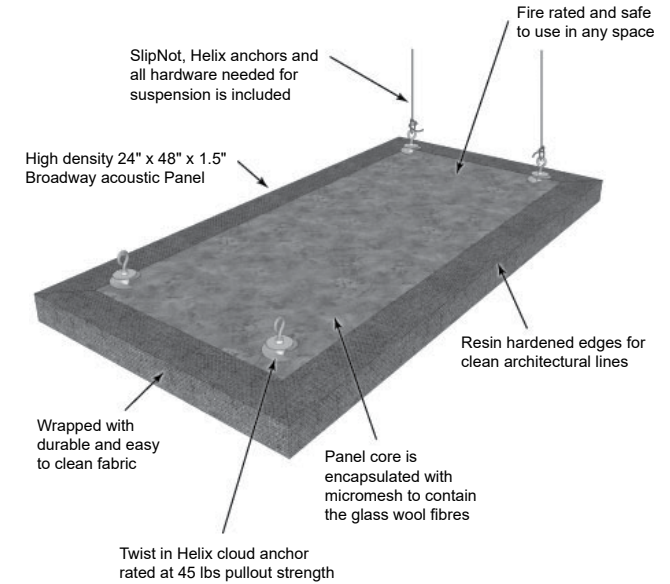


Photo shows typical Nimbus Cloud Kit Mounting.



**FIRE & BURN PERFORMANCE:**

COUNTRY	TEST STANDARD	CLASSIFICATION
<b>FABRIC WRAP</b>		
Canada	CAN/ULC-S102-03	Class A/1
USA	ASTM E84-09	Class A/1
Europe	EN 13501-1	A2-s1, d0
Australia / New Zealand	AS/NZS 1530.3	(I)0, (S)0, (H)0, (Sm)5
<b>PAINTABLE</b>		
Canada	CAN/ULC-S102-10	Class A/1
USA	ASTM E84-11b	Class A/1
Europe	EN 13501-1	B-s2, d0
Australia / New Zealand	AS/NZS 1530.3	(I)0, (S)0, (H)0, (Sm)3

**APPLICATION:**



# ALTOS, HALO & HEXUS

Broadway acoustic clouds are a collection of shaped acoustic panels that can be used as ceiling clouds, baffles or wall panels to reduce reverberation and improve intelligibility. The unique shapes and sizes allow architects, designers and installers to come up with creative solutions that are bold and architecturally pleasing.

The range includes the circular Halo the hexagonal Hexus and the square Altos, each available in 36" (914mm) or 48" (1219mm) diameters. Panels are constructed from 1.5" (38mm) thick high-density (6pcf/96kg/m<sup>3</sup>) glass wool for exceptionally even absorption across all frequencies. The clouds are completely encapsulated in micromesh with resin-hardened edges, and are factory finished on all sides in Paintable Absolute White™ latex or Arctic White fabric (Altos only). All panels have been tested for fire safety according to ASTM E84, CAN/UL S102 and EN 13823 for use in installations worldwide. 2 panels per box with mounting hardware.

**SPECIFICATIONS:**

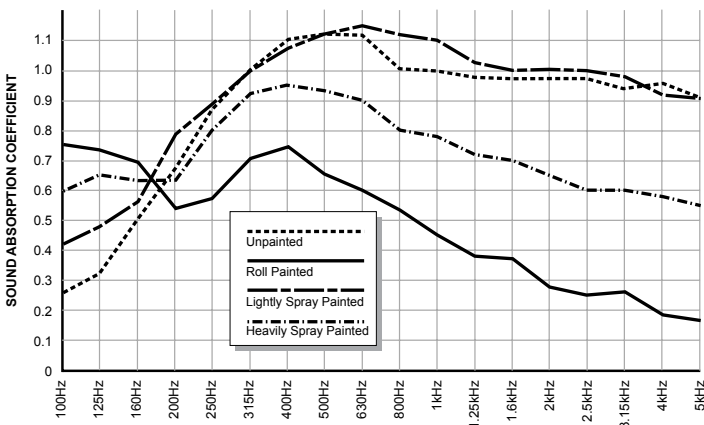
<b>PANEL DEPTH</b>	1.5" (38mm)
<b>CORE MATERIAL DENSITY</b>	Formed, semi-rigid inorganic glass fibres, 6.0 lbs pcf (96 kg/m <sup>3</sup> )
<b>FACING</b>	Acoustically transparent polyester or paintable glass wool tissue micromesh sealed with latex paint
<b>BACKING</b>	Sealed with acoustically transparent micromesh
<b>EDGE TREATMENT</b>	Sealed and hardened with resin
<b>RECYCLED CONTENT</b>	Up to 51%
<b>LEED ELIGIBLE</b>	Yes

**ABSORPTION CHARACTERISTICS:\***

Sound absorption coefficient data for 1.5" (38mm) panels

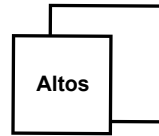
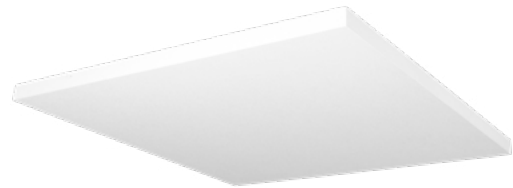
	125Hz	250Hz	500Hz	1kHz	2kHz	4kHz	NRC
Unpainted	0.32	0.87	1.11	1.04	0.96	0.96	1.00
Rolled Paint	0.74	0.58	0.66	0.45	0.25	0.17	0.50
Light Spray Paint	0.48	0.89	1.12	1.10	1.00	0.92	1.05
Heavy Spray Paint	0.65	0.80	0.93	0.78	0.65	0.58	0.79

\* Testing performed by Riverbank Acoustical Laboratories. The test method conform explicitly with the requirements of the ASTM Standard Test Method for Sound Absorption and Sound Absorption Coefficients by the Reverberation Room Method: ASTM C 423-02a and E795-05.



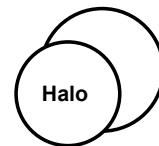
**PAINTABLES FIRE & BURN PERFORMANCE:**

COUNTRY	TEST STANDARD	CLASSIFICATION
Canada	CAN/ULC-S102-10	Class A/1
USA	ASTM E84-11b	Class A/1
Europe	EN 13501-1	B-s2, d0
Australia / New Zealand	AS/NZS 1530.3	(I)0, (S)0, (H)0, (Sm)3



<b>ORDER NUMBER</b>	P250-1108-XX	P250-1110-XX
<b>DIMENSION</b>	36" (914mm)	48" (1219mm)
<b>WEIGHT</b>	11lbs (5.1kg)	17lbs (7.7kg)
<b>SURFACE AREA</b>	9ft <sup>2</sup> (1.48m <sup>2</sup> )	164ft <sup>2</sup> (1.48m <sup>2</sup> )

(xx denotes color code 01=Arctic White; 09=Absolute White™)



<b>ORDER NUMBER</b>	P250-1100-09	P250-1102-09
<b>DIMENSION</b>	36" (914mm)	48" (1219mm)
<b>WEIGHT</b>	7.4lbs (3.4kg)	13.6lbs (6.2kg)
<b>SURFACE AREA</b>	7ft <sup>2</sup> (0.65m <sup>2</sup> )	12.6ft <sup>2</sup> (1.17m <sup>2</sup> )



<b>ORDER NUMBER</b>	P250-1104-09	P250-1106-09
<b>DIMENSION</b>	36" (914mm)	48" (1219mm)
<b>WEIGHT</b>	6.2lbs (2.8kg)	10.9lbs (4.9kg)
<b>SURFACE AREA</b>	5.7ft <sup>2</sup> (0.53m <sup>2</sup> )	10.34ft <sup>2</sup> (1.06m <sup>2</sup> )

**INCLUDED HARDWARE:**



Helix Anchor



Eye-Hook



Drywall/Masonry Anchors



SlipNot Suspension Cable

**APPLICATION:**

