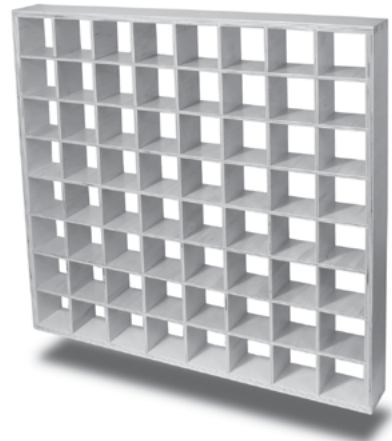


Radiator™

USER GUIDE

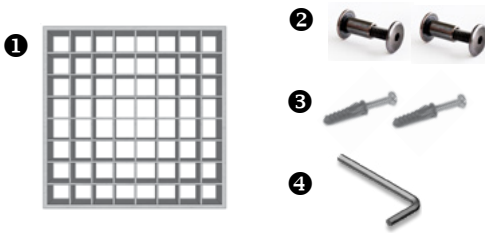


Congratulations on purchasing the Radiator from Primacoustic! The Radiator is an open cell diffuser designed to breakup sound waves and reflect diffused sound back into the room. Please take a few minutes to read through this install manual. It includes a list of parts as well as step by step mounting instructions. Please refer to www.primacoustic.com for various placement options, benefits, and general room acoustic information. Should you have any questions or comments, we invite you to send us an email at info@primacoustic.com.

BOX CONTENTS:

Before installing, please take a moment to familiarize yourself with the box contents.

Ref.#	Description:	(QTY)
①	Radiator Open Cell Diffuser	(x 1)
②	Coupling Bolts	(x 2)
③	Drywall Anchors and Screws	(x 2)
④	Allen Wrench	(x 1)



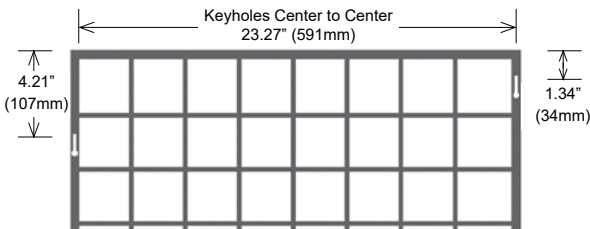
MOUNTING THE RADIATOR

The Radiator can be used in a variety of ways. It can be mounted on walls, dropped into a T-bar ceiling grid or clustered together and suspended from a ceiling to create an acoustic cloud. To address these different applications the Radiator has several special mounting functions built in.

WALL MOUNTING WITH KEYHOLES

On the back side of the Radiator you will find two keyholes cut into the outer frame. These are designed for wall mounting the Radiator using the supplied drywall anchors and screws. The keyholes are staggered to prevent closely spaced adjacent anchors when mounting Radiators side by side.

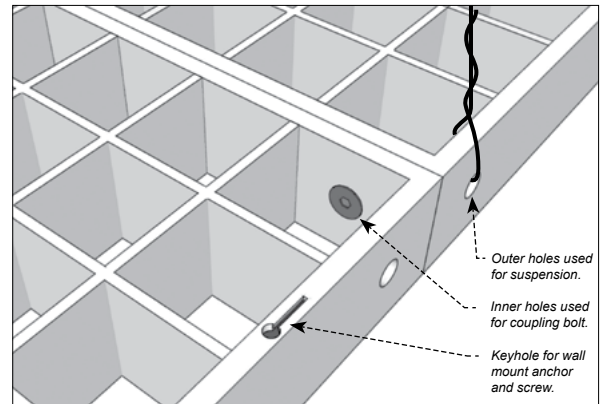
Start by positioning the Radiator on the wall and lightly marking the top, and sides using a pencil. Create a mark for the left anchor location by measuring down from the top, left corner by 4.21" (107mm) and inward by 1/4" (6mm). Next, measure down from the top, right corner by 1.34" (34mm) and inward by 1/4" (6mm) for the right anchor location. Use a nail or thin screwdriver to create a guide hole on the mark for the anchor. This will ensure the anchor goes in square exactly where you want it. Tap the anchor into the wall and affix the screw. Leave the head of the screw sticking out enough for the keyhole slot to grab onto. If you plan on wall mounting two units, one above and below, you can bolt the two units together using the coupling bolts and hang both from one set of anchors.



Keyhole locations when viewing the Radiator from the front with keyholes on the back side: Horizontal measurements between anchors is 23.27" or 591mm center to center.

COUPLING AND SUSPENSION POINTS

The Radiator is pre-drilled with 8 holes along the outer frame. These are used for coupling multiple Radiators together to create a cluster and for suspending the cluster. These holes are located towards the back side of the Radiator so that the suspension wire is less visible.



CREATING CLUSTERS

Multiple Radiators can be ganged together to create clusters by using the included coupling bolts. The coupling bolts are designed to provide an almost invisible means of linking Radiators together. Clusters can be wall mounted or suspended from the ceiling. Not only is clustering highly effective acoustically, but with careful application of ceiling lights, a suspended cluster can create dramatic lighting effects that inspire creativity!

Begin by assembling the cluster on the floor. Insert two coupling bolts between adjacent units but do not tighten until all the bolts have been inserted. If you tighten the bolts as you go there is a chance the last few bolts will be difficult to insert. After the cluster is assembled, use the supplied hex wrench to tighten all the bolts. See the opposite side of this page for examples of Radiator clusters.

SUSPENDING THE CLUSTER

The unused frame holes are used to suspend the cluster. Choose frame holes that will evenly support the cluster. See the opposite side of this page for examples of suspension locations for clusters. Very large clusters may need to be supported in the center as well as the outside edge. The hardware required for suspension is not included. Use cable, chain or wire and a ceiling anchor system capable of supporting the weight of your cluster. It is up to the installer to ensure secure overhead suspension. Primacoustic can not be responsible for damages or injury caused by inadequate or unsafe overhead suspension methods. If you are uncomfortable with these instructions please seek the help of a professional contractor.

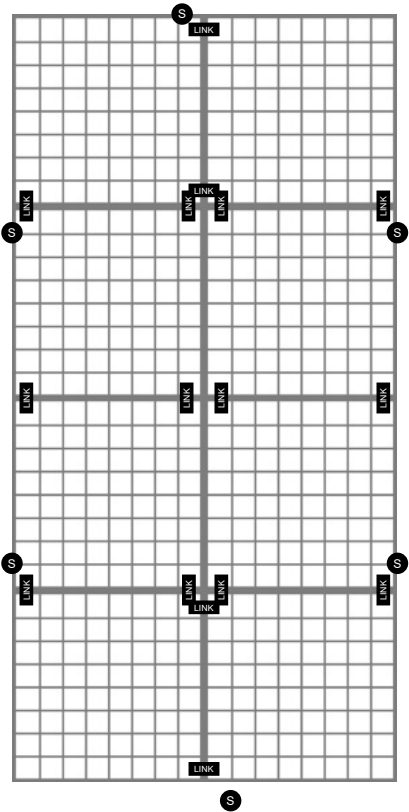
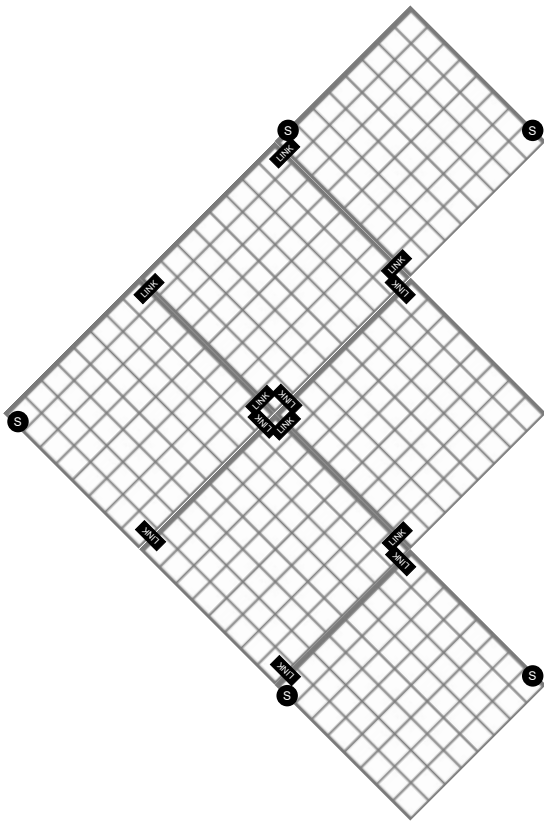
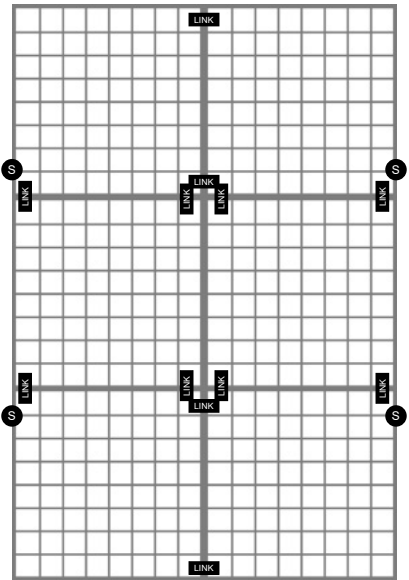
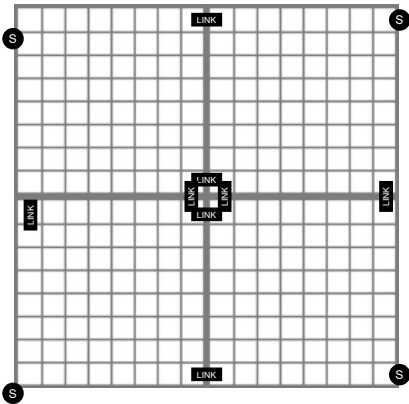
PAINTING THE RADIATOR

The Radiator comes pre-finished in a natural wood but you can easily paint the Radiator. Begin by lightly sanding the finish. Then apply a base coat followed by the desired color. We recommend spray painting as this will make it easier to get inside all of the corners and surfaces. Painting will not affect the acoustic performance.

COUPLING PATTERN EXAMPLES

S = Suspension Point

LINK = Coupling Point



LIMITED WARRANTY

Please inspect products immediately after receiving your purchase. Primacoustic acoustic products are guaranteed to be free of manufacturing defects for a period of 3 years after purchase. In the unlikely event that a defect is uncovered, please call 604-942-1001 to obtain a RA number (Return Authorization number) from Primacoustic before the 3 year warranty period expires. Once you have obtained a RA number you must return the product, freight prepaid, within fifteen (15) days after the date the RA number is issued. Please return the product in the original packaging (or another, affording an equal degree of protection) with all of the following: (1) RA number clearly marked on the returned package; (2) a receipt or bill of sale showing proof of purchase from an authorized seller; plus (3) a letter describing the defect. Please include your name, address, telephone number and the applicable RA number. You are solely responsible for all shipping and insurance costs for returning the product to Primacoustic, and you will not be reimbursed or compensated for any loss or damage incurred during return shipping. Primacoustic will at its sole discretion repair or replace the product. Should the product no longer be available, Primacoustic reserves the right to exchange this with a product of similar performance and value. Due to different dye lots, Primacoustic cannot guarantee exact color match. This Warranty shall solely extend to the original owner and is limited to manufacturing defects and excludes damage due to improper installation, freight handling, wear and tear, abuse, misuse, misapplication, color fading or deterioration due to prolonged exposure to ultra violet light, smoke, humidity or other environmental factors. It is understood that the use and suitability of the product is entirely the responsibility of the buyer or specifying engineer and as such, these parties agree to hold Primacoustic, or its associated company, and/or officers, harmless from any responsibility whatsoever other than what is clearly outlined in this warranty.