

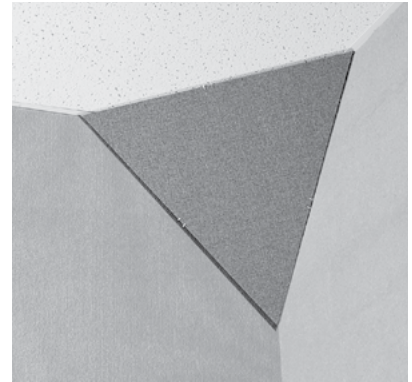


PRIMACOUSTIC®

Cumulus Trap

INSTALLATION MANUAL

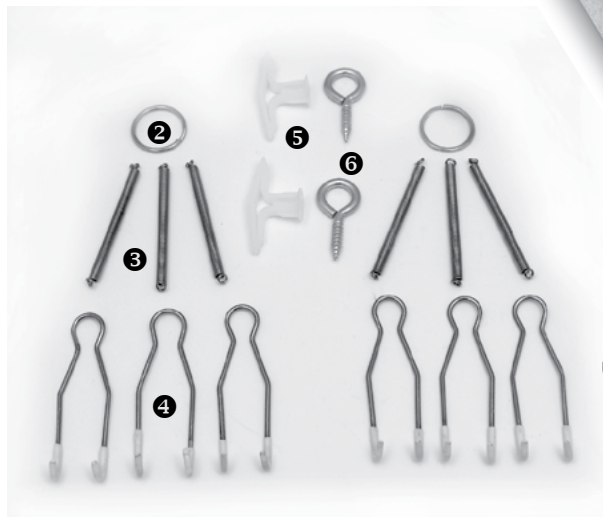
Congratulations on purchasing the Cumulus Trap from Primacoustic. The Cumulus is an easy to install triangle bass trap that will effectively absorb a broad band of frequencies and look great for years to come. Please take a few minutes to read through this install manual. It includes a list of parts as well as step by step mounting instructions. Please refer to www.primacoustic.com for various placement options, benefits, and general room acoustic information. Should you have any questions or comments, we invite you to send us an email at: info@primacoustic.com



BOX CONTENTS:

Before beginning assembly, please take a moment to familiarize yourself with the box contents.

Ref.#	Description:	(Qty.)
①	Cumulus Trap panels(2)	
②	Rings	(2)
③	Springs	(6)
④	Cleats	(6)
⑤	Butterfly anchors	(2)
⑥	Eye-screws	(2)
⑦	Cable-tie straps	(2)



TOOLS REQUIRED:

- Hammer or mallet
- Drill with 5/16" and 1/8" bit

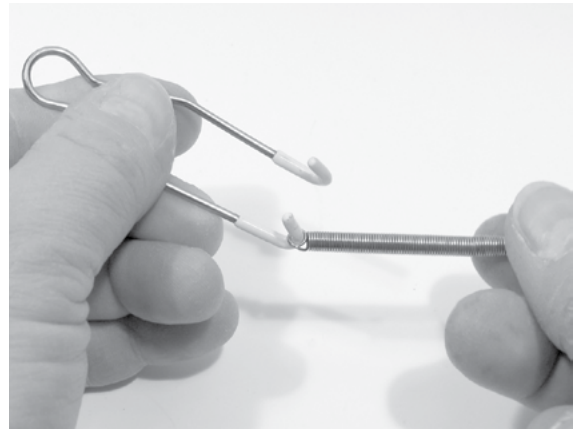


PRIMACOUSTIC®

- ① Before you unpack the shipping box, check for damage and missing items. All included parts are listed on the front page of this manual.



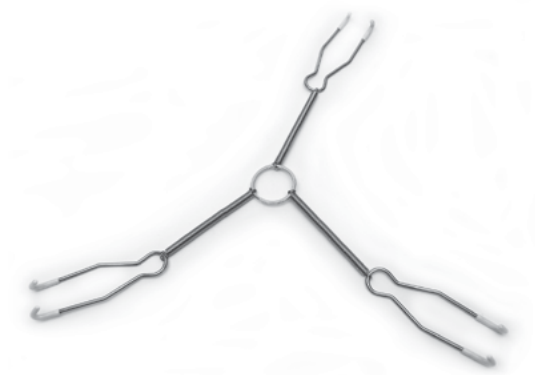
- ② Prepare the springs and cleats. Slip one end of the spring over the cleat. It can be a tight fit so take your time and gently work the spring over the cleat's rubber coating. The coating can also be removed if necessary.



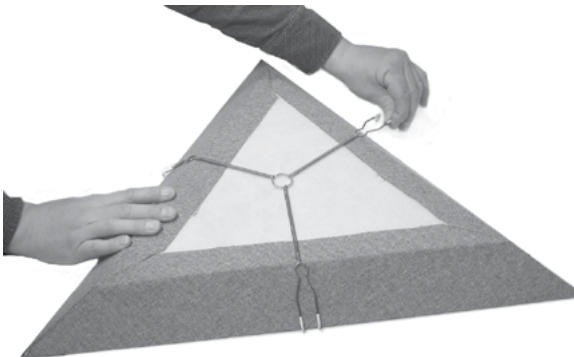
- ③ Each Cumulus requires three springs and three cleats. Repeat the process until you have prepared them as shown.



- ④ Thread the three spring and cleat assemblies onto the ring.



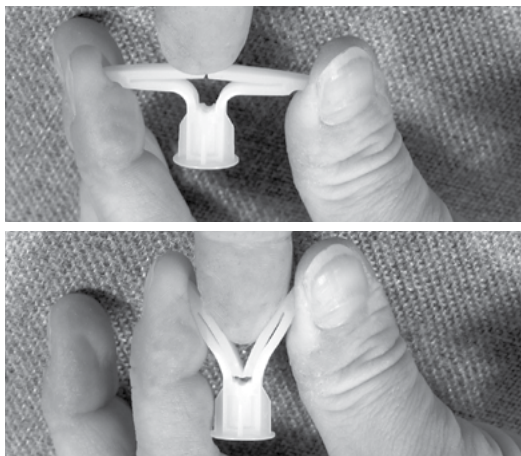
- ⑤ Place the Cumulus panel face down on a clean surface. Hook one cleat onto the edge of the Cumulus. Stretch the two remaining spring cleats and hook on to the other edges.



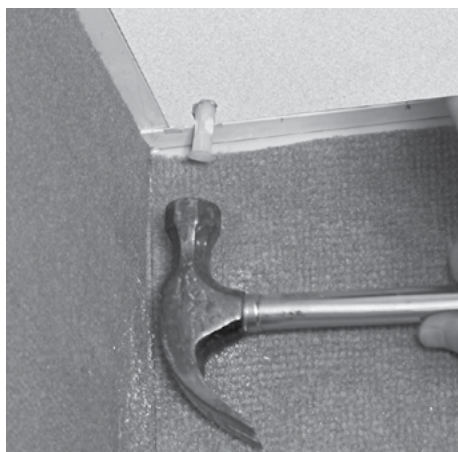
- ⑥ Locate a point on the ceiling approximately two inches out (50mm) from the corner and tap in a nail. If the backing is solid, drill an 1/8" hole for the eye-screw and skip to step 9. If the space above is hollow, drill a 5/16" hole and follow steps 7 and 8 to install the butterfly anchor.



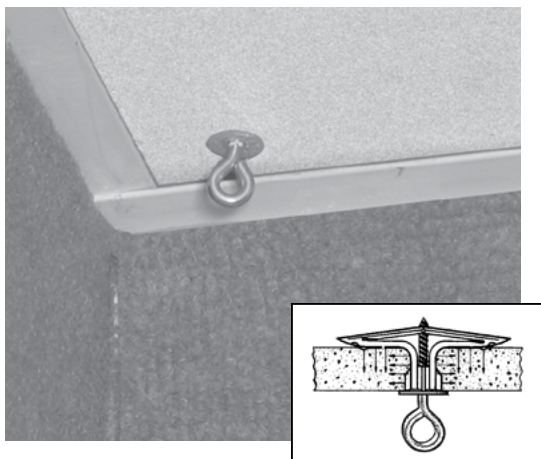
- 7** Prepare the butterfly anchors by pushing in with your finger until the anchor folds in half. Squeeze the halves together and insert into the 5/16" hole.



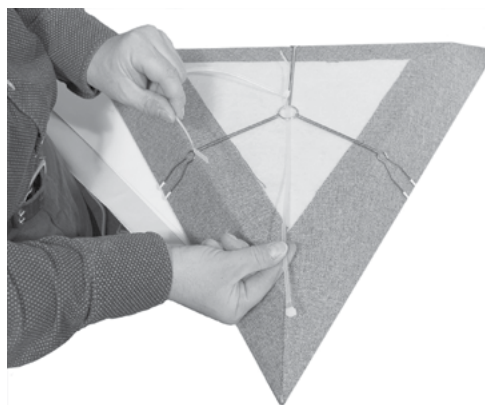
- 8** Use a hammer to lightly tap the anchor in flush with the ceiling.



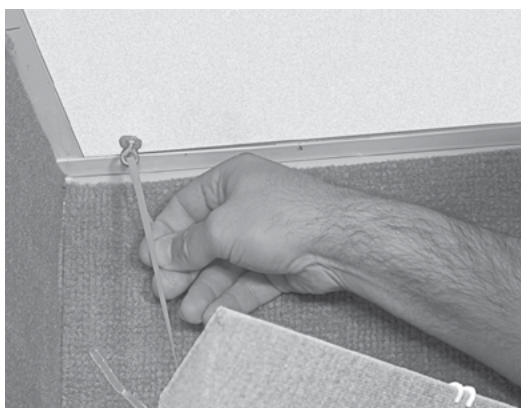
- 9** Once the anchor is installed, fully screw the eye-screw in until the threads are no longer visible. Doing so will ensure the butterfly anchor opens on the other side.



- 10** Thread the cable-tie through the ring on the back of the panel. Do not close the cable-tie yet, it will need to go through the eye-screw in the ceiling.



- 11** Thread the cable-tie through the eye-screw and close the ends into a loop. Reach up behind the panel and pull down on the cable-tie to tighten.



- 12** Tightening the cable-tie will create tension on the springs. There should be enough tension to lightly pull the panel up and into the corner. Adjust the panel into the final flush position.



FIRE SAFETY

Broadway panels have been tested to meet the most stringent ASTM and CSA testing requirements for the USA and Canada. For international customers, please consult your local building authority for proper cross-compatibility specifications.

BROADWAY FIRE & BURN TEST CHARACTERISTICS

TEST	CLASS	FLAME SPREAD	SMOKE DENSITY
ASTM E 84	1 OR A	15 FSI	155 SD
CAN/UL-S102	1 OR A	15 FSCI	155 SD

** Actual test data provided by Bodycote Materials Testing Inc.
and available for download from www.primacoustic.com*

WARRANTY

Please inspect products immediately after receiving your purchase. Primacoustic acoustic products are guaranteed to be free of manufacturing defects for a period of 3 years after purchase. In the unlikely event that a defect is uncovered, please call 604-942-1001 to obtain a RA number (Return Authorization number) from Primacoustic before the 3 year warranty period expires. Once you have obtained a RA number you must return the product, freight prepaid, within fifteen (15) days after the date the RA number is issued. Please return the product in the original packaging (or another, affording an equal degree of protection) with all of the following: (1) RA number clearly marked on the returned package; (2) a receipt or bill of sale showing proof of purchase from an authorized seller; plus (3) a letter describing the defect. Please include your name, address, telephone number and the applicable RA number. You are solely responsible for all shipping and insurance costs for returning the product to Primacoustic, and you will not be reimbursed or compensated for any loss or damage incurred during return shipping. Primacoustic will at its sole discretion repair or replace the product. Should the product no longer be available, Primacoustic reserves the right to exchange this with a product of similar performance and value. Due to different dye lots, Primacoustic cannot guarantee exact color match. This Warranty shall solely extend to the original owner and is limited to manufacturing defects and excludes damage due to improper installation, freight handling, wear and tear, abuse, misuse, misapplication, color fading or deterioration due to prolonged exposure to ultra violet light, smoke, humidity or other environmental factors. It is understood that the use and suitability of the product is entirely the responsibility of the buyer or specifying engineer and as such, these parties agree to hold Primacoustic, or its associated company, and/or officers, harmless from any responsibility whatsoever other than what is clearly outlined in this warranty.